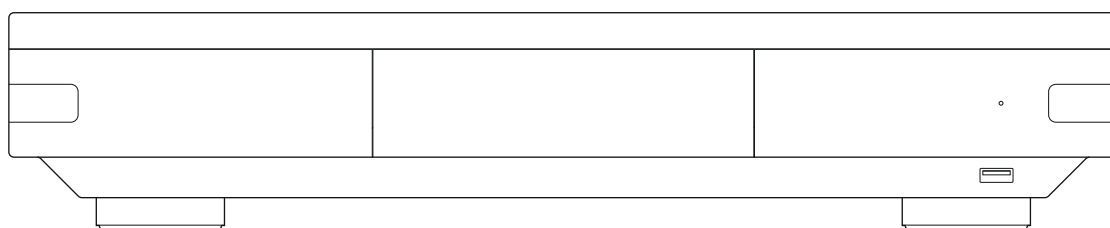


User Guide

Rvolution

Chassis DIY-X700

English



Important Safety Instructions

- 1) Read and keep these instructions.
- 2) Heed all warnings.
- 3) Follow all instructions.
- 4) Do not use this apparatus near water.
- 5) Clean only with dry cloth.
- 6) Do not block any ventilation openings.
- 7) Do not install near any heat sources such as radiators, heat registers, stoves, or other apparatus (including amplifiers) that produce heat.

WARNING:

TO REDUCE THE RISK OF FIRE OR ELECTRIC SHOCK, DO NOT EXPOSE THIS APPLIANCE TO RAIN OR MOISTURE. DANGEROUS HIGH VOLTAGES ARE PRESENT INSIDE THE ENCLOSURE. DO NOT OPEN THE CABINET. REFER SERVICING TO QUALIFIED PERSONNEL ONLY.

THE APPARATUS SHALL NOT BE EXPOSED TO DRIPPING OR SPLASHING AND THAT NO OBJECTS FILLED WITH LIQUIDS, SUCH AS VASES SHALL BE PLACED ON THE APPARATUS.



Warning:

This equipment has been tested and found to comply with the limits for a Class B digital device, pursuant to part 15 of the FCC Rules. These limits are designed to provide reasonable protection against harmful interference in a residential installation. This equipment generates, uses and can radiate radio frequency energy and, if not installed and used in accordance with the instructions, may cause harmful interference to radio communications. However, there is no guarantee that interference will not occur in a particular installation. If this equipment does cause harmful interference to radio or television reception, which can be determined by turning the equipment off and on, the user is encouraged to try to correct the interference by one or more of the following measures:

- Reorient or relocate the receiving antenna.
- Increase the separation between the equipment and receiver.
- Connect the equipment into an outlet on a circuit different from that to which the receiver is connected.
- Consult the dealer or an experienced radio/TV technician for help.

Caution: Any changes or modifications to this device not explicitly approved by manufacturer could void your authority to operate this equipment.

This device complies with part 15 of the FCC Rules. Operation is subject to the following two conditions: (1) This device may not cause harmful interference, and (2) this device must accept any interference received, including interference that may cause undesired operation.

Getting More Information

Due to the regular evolution and the addition of new functionalities, provided by firmware and software updates, it is impossible to cover all functionalities in this user's guide. For this reason, we invite you to visit our online **Rvolution Knowledge Base**. You will find a large amount of tutorials and various help topics concerning the use of the media player and Rvolution applications:

rvolution.com/knowledgebase

About Rvolution

Rvolution designs and manufactures only professional grade Video Management Systems; delivering the highest quality, outstanding performance, and best possible user experience.

All our products are designed to provide our end-user customers with convenient and intuitive access to their entire movie library collection, in stunning 4K, High Definition resolution. Rvolution devices are made to improve the movie watching experience, in residential and commercial environments.

To ensure the ultimate performance, all Rvolution devices are supplied to authorized resellers through a worldwide network of established and well respected partners.

More info: rvolution.com



WEEE symbol

Correct Disposal of This Product. (Waste Electrical & Electronic Equipment) Applicable in the European Union and other European countries with separate collection systems.

This marking on the product, accessories or literature indicates that the product and its electronic accessories (remote handset) should not be disposed of with other household waste at the end of their working life. To prevent possible harm to the environment or human health from uncontrolled waste disposal, please separate these items from other types of household waste and recycle them responsibly to promote the sustainable reuse of material resources.

More info can be found here:

<http://ec.europa.eu>

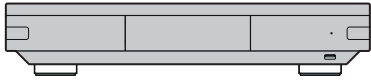
CAUTION:

DANGER OF EXPLOSION IF BATTERY IS INCORRECTLY REPLACED. REPLACE ONLY WITH THE SAME OR EQUIVALENT TYPE. DO NOT REPAIR YOURSELF. REFER SERVICING TO QUALIFIED PERSONNEL.

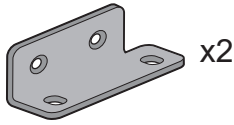


This product complies with European Low Voltage (2006/95/CE), Electromagnetic Compatibility (2004/108/EC) and Environmentally-friendly design of Energy-related Products (2009/125/EC) Directives when used and installed according to this instruction manual.

Accessories

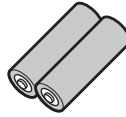


A.

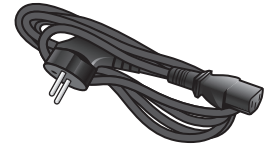


B.

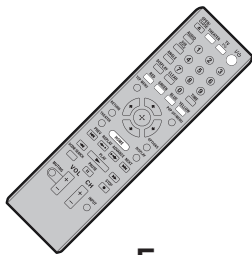
x2



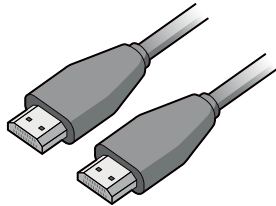
C.



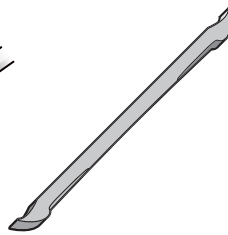
D.



E.

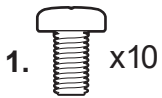


F.



G.

- A. R_volution Chassis DIY-X700
- B. Rack-mounting ears
- C. Remote control batteries
- D. Remote control
- E. HDMI cable
- F. Power cable
- G. Chassis opening tool



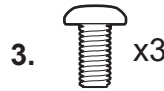
1.

x10



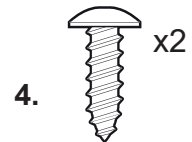
2.

x8



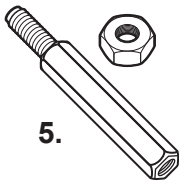
3.

x3

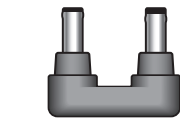


4.

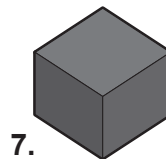
x2



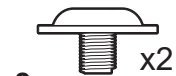
5.



6.



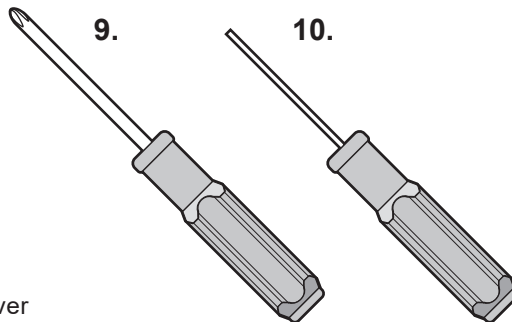
7.



8.

x2

- 1. Screw
- 2. Screw
- 3. Screw
- 4. Screw
- 5. Elevator and nut
- 6. U-shaped DC plug
- 7. Thermal cube
- 8. Screw
- 9. Phillips screwdriver
- 10. Allen (hex) screwdriver



9.

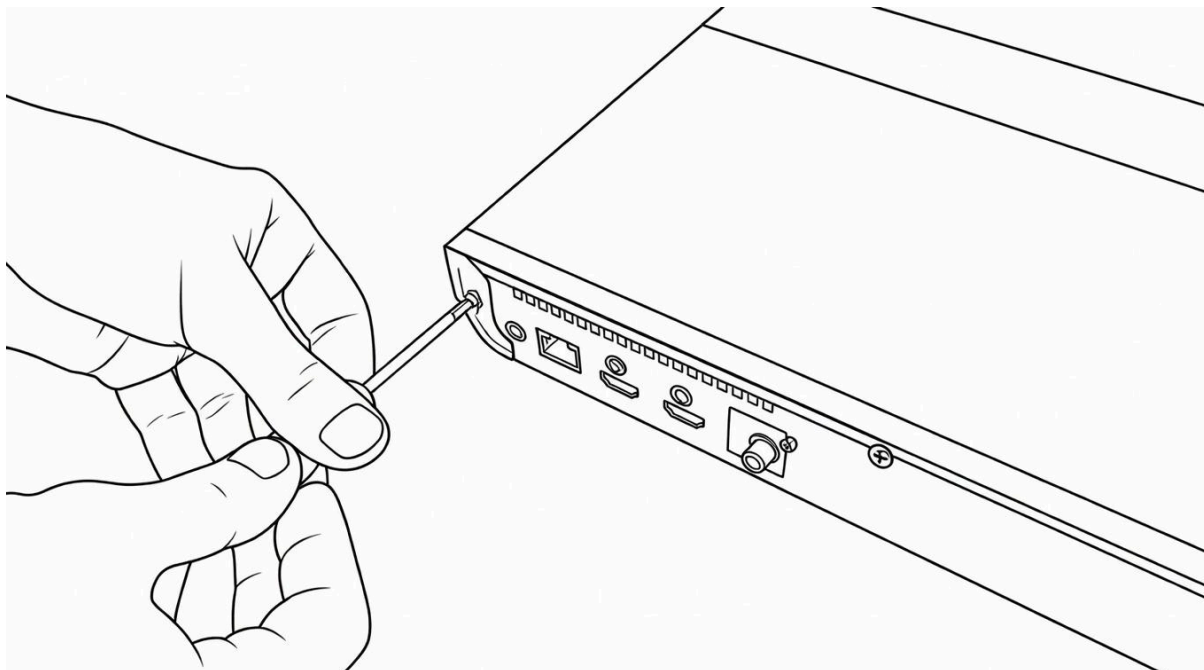
10.



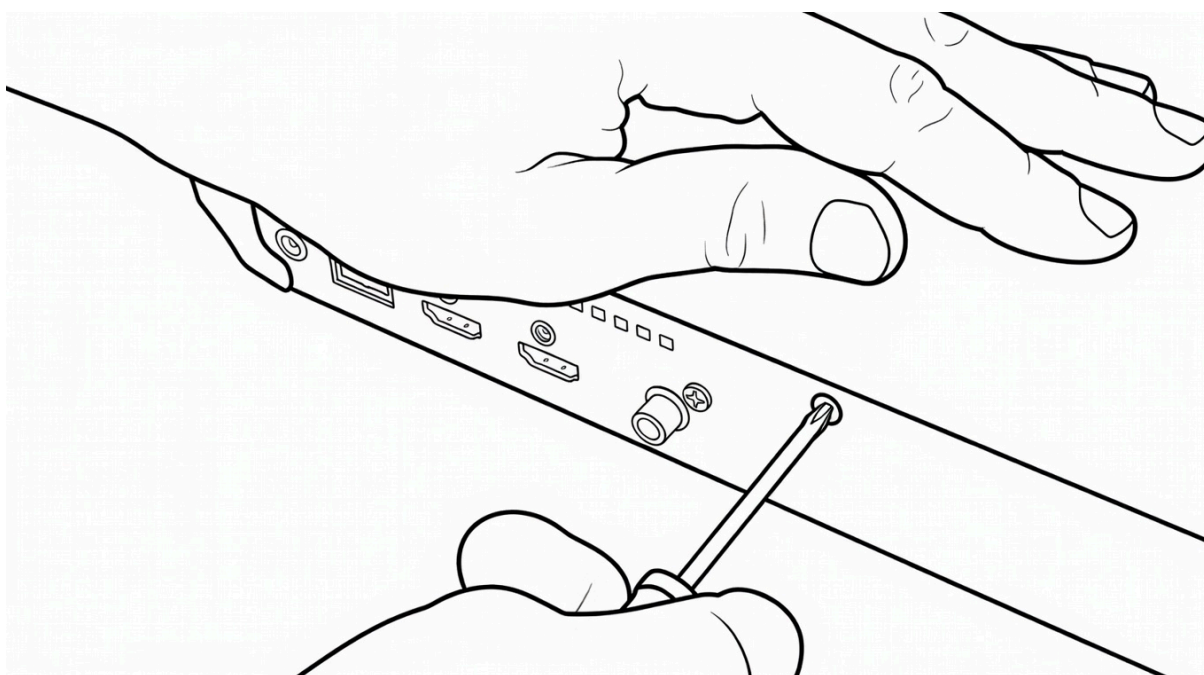
NOTE: Additional accessories and cables may be included depending on your region.

First, **open the box of your Sony UBP-X700 player** and **take out the player**. The first step will be to disassemble it and retrieve the motherboard and the optical unit.

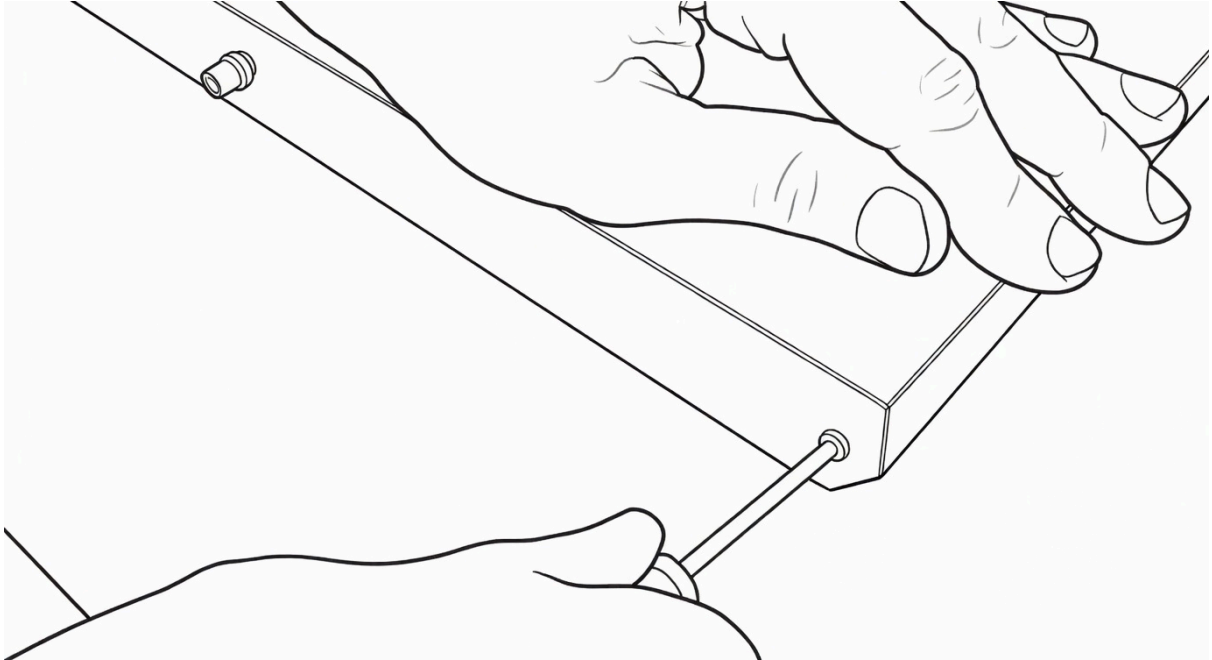
Take the supplied **Phillips screwdriver** and **unscrew the 3 screws of the cover** located at the **back of the Sony player**.



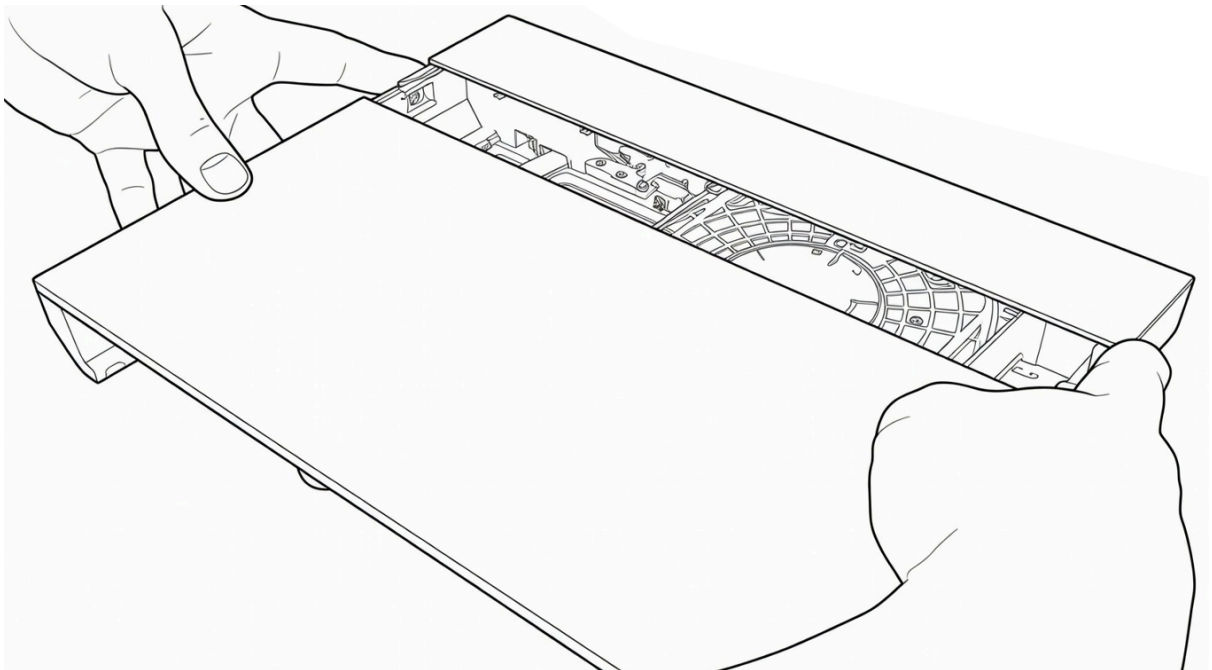
Start with the **left screw**.



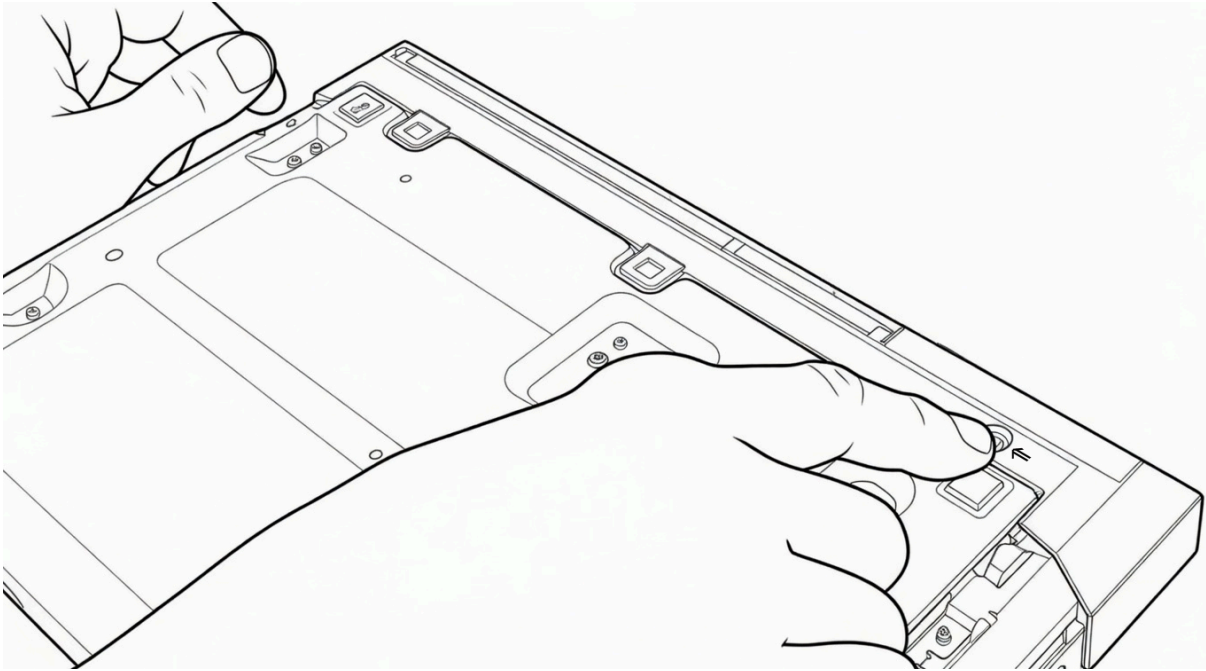
Then, **unscrew** the one in the **center**.



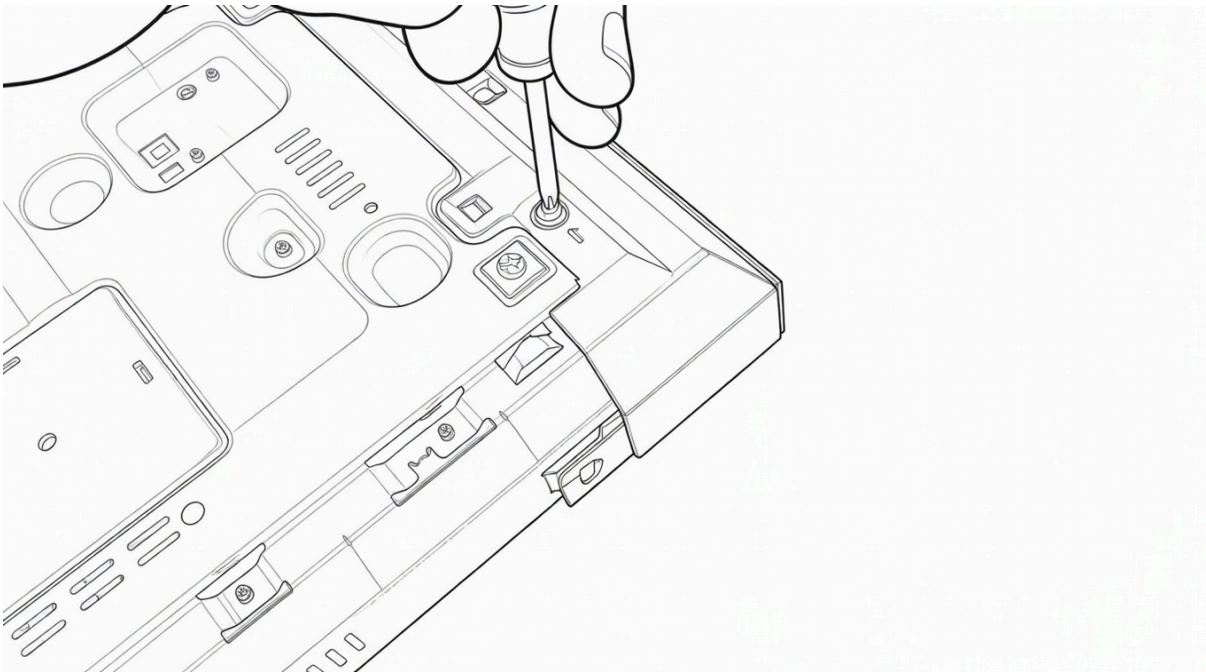
Finally, **unscrew** the one on the **right**.



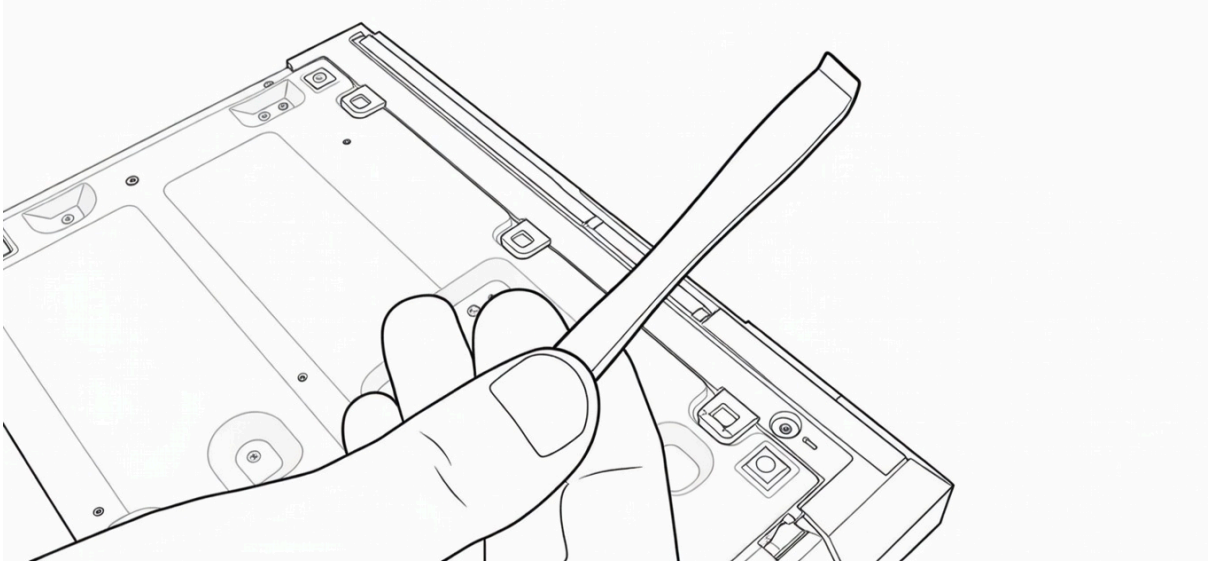
Then, slide the cover towards the back of the device, placing your index fingers on the front of the chassis.



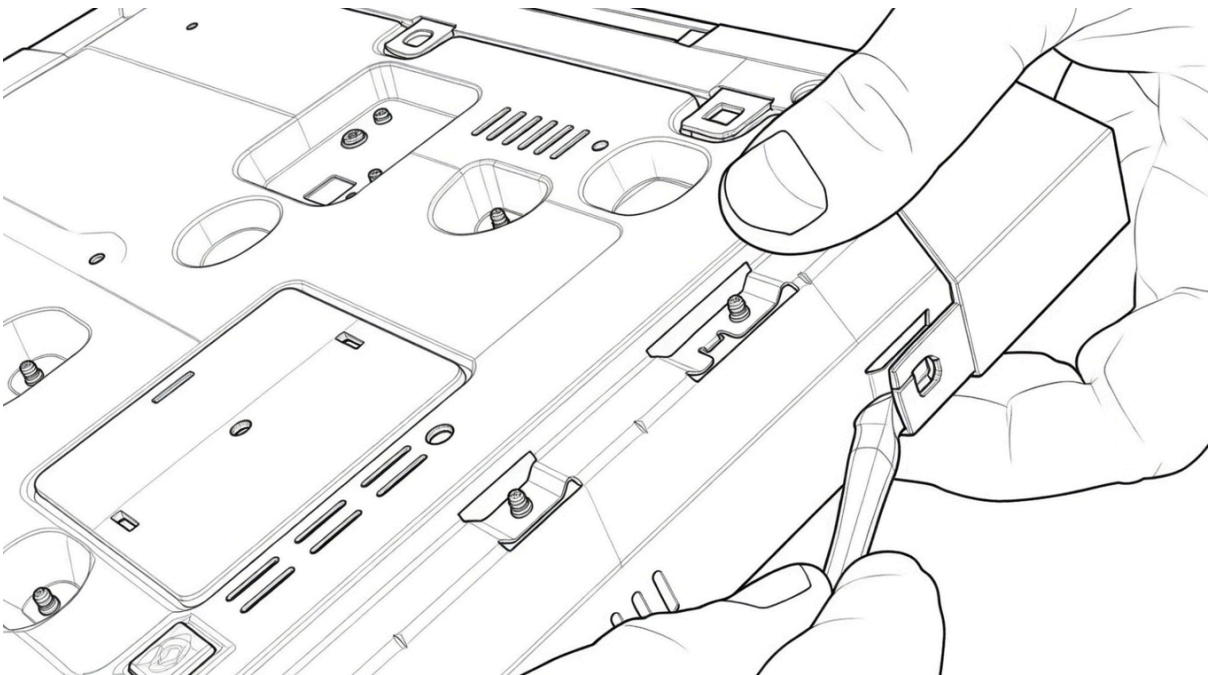
Then, **turn the player over** and locate the **screw next to an arrow**.



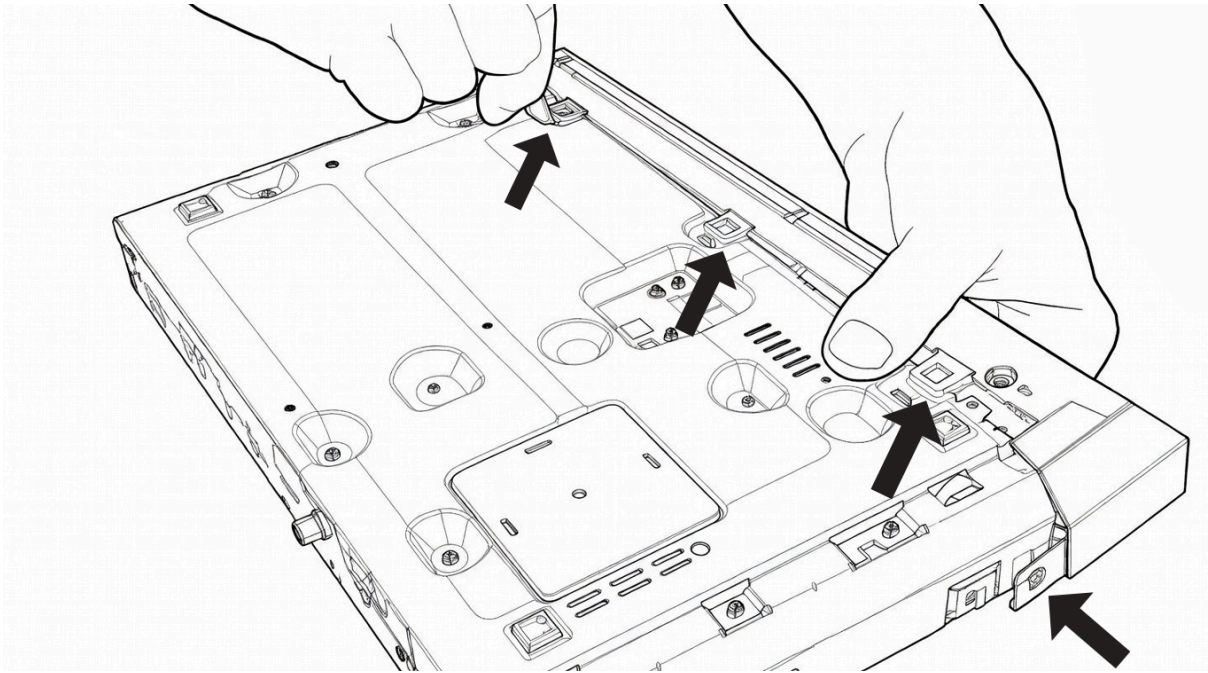
Then, still using the **Phillips screwdriver**, **unscrew the screw**. Set all the screws aside. *You will no longer need them for the Rvolution Chassis DIY-X700 but keep them in a bag in case you need to reassemble the Sony drive for a warranty return or resale later.*



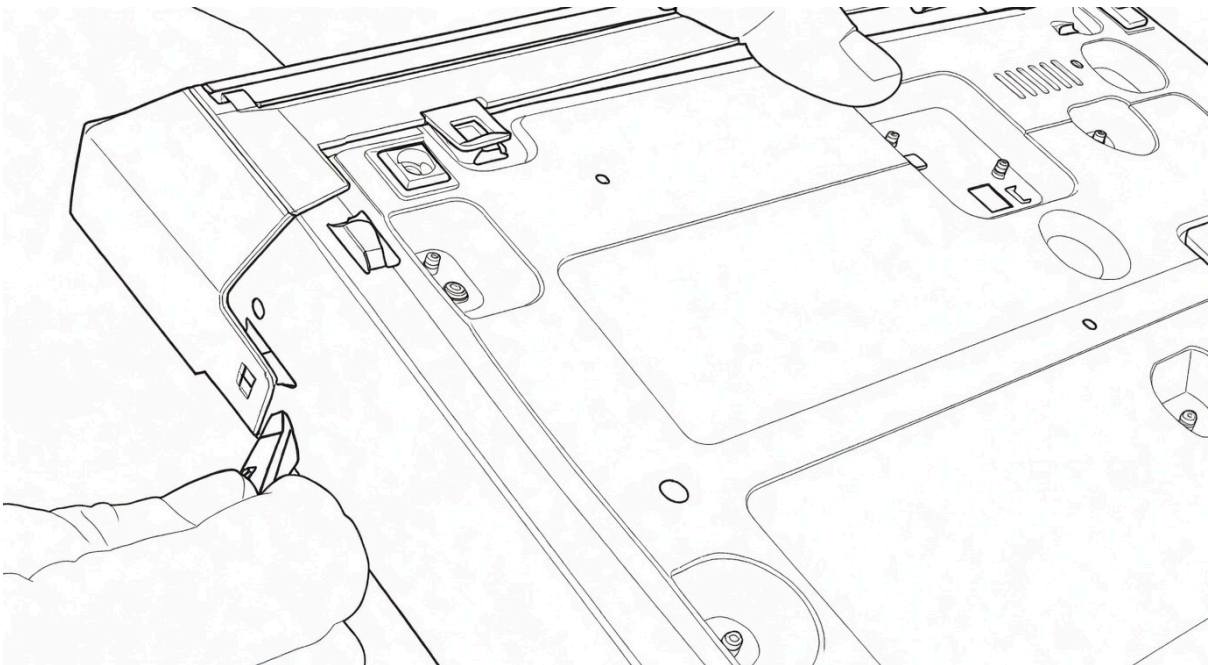
Then, take the provided **blue disassembler**. It is a tool specifically dedicated to opening the chassis.



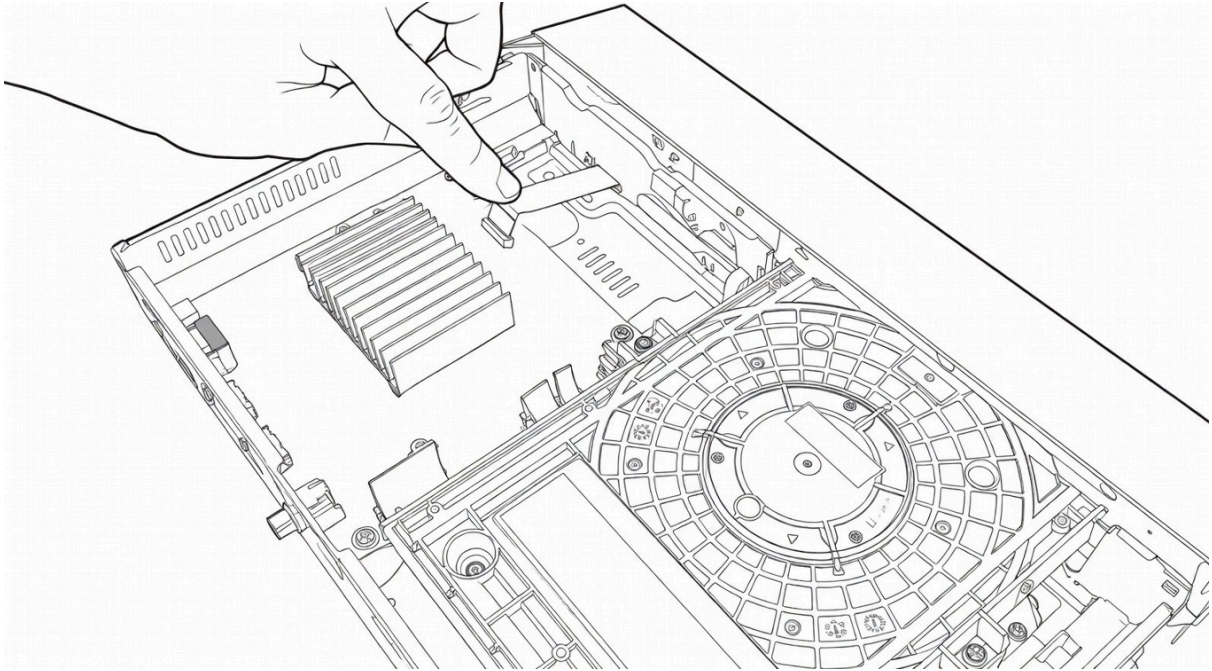
Start by **unclipping the right side**, then hold the front panel to prevent it from clipping back on.



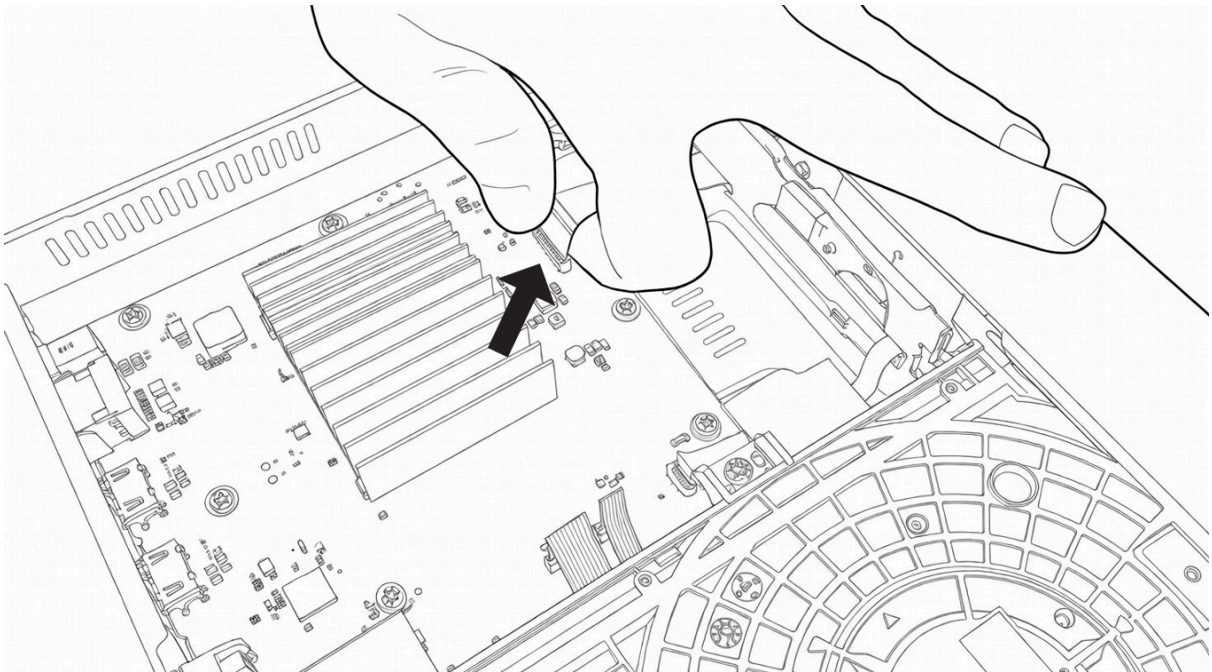
Continue by **unclipping the middle**.



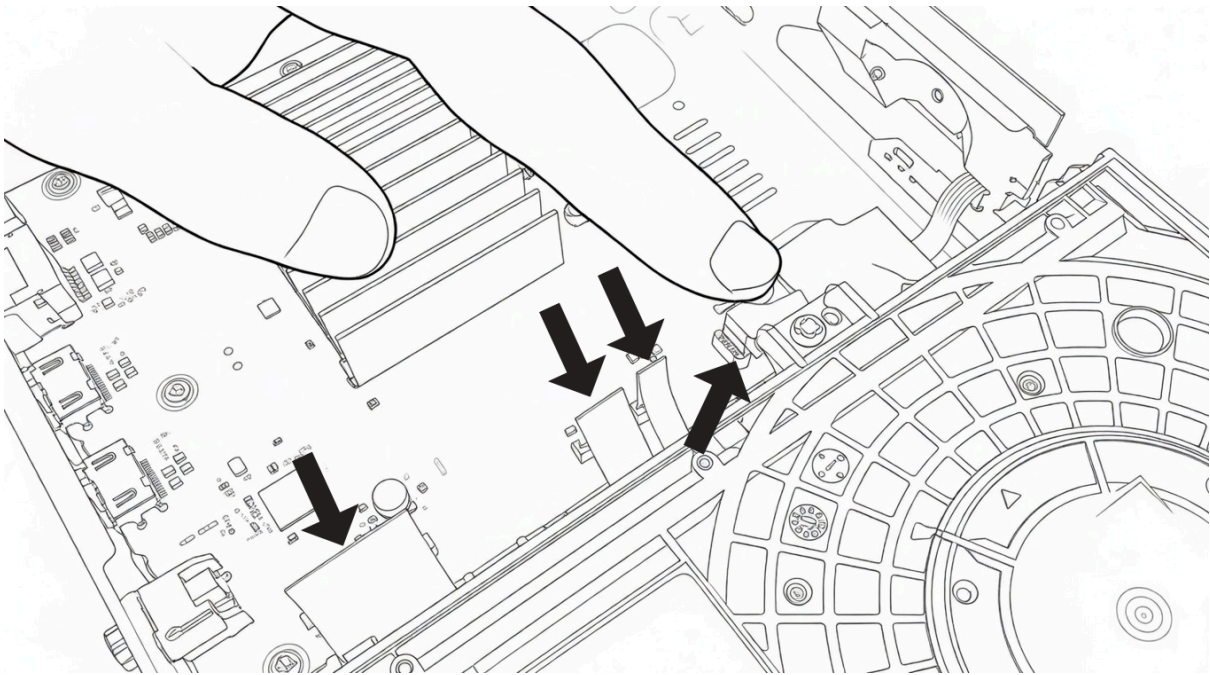
Then, finish with the **left side**, which will allow you to completely remove the front panel of the player.



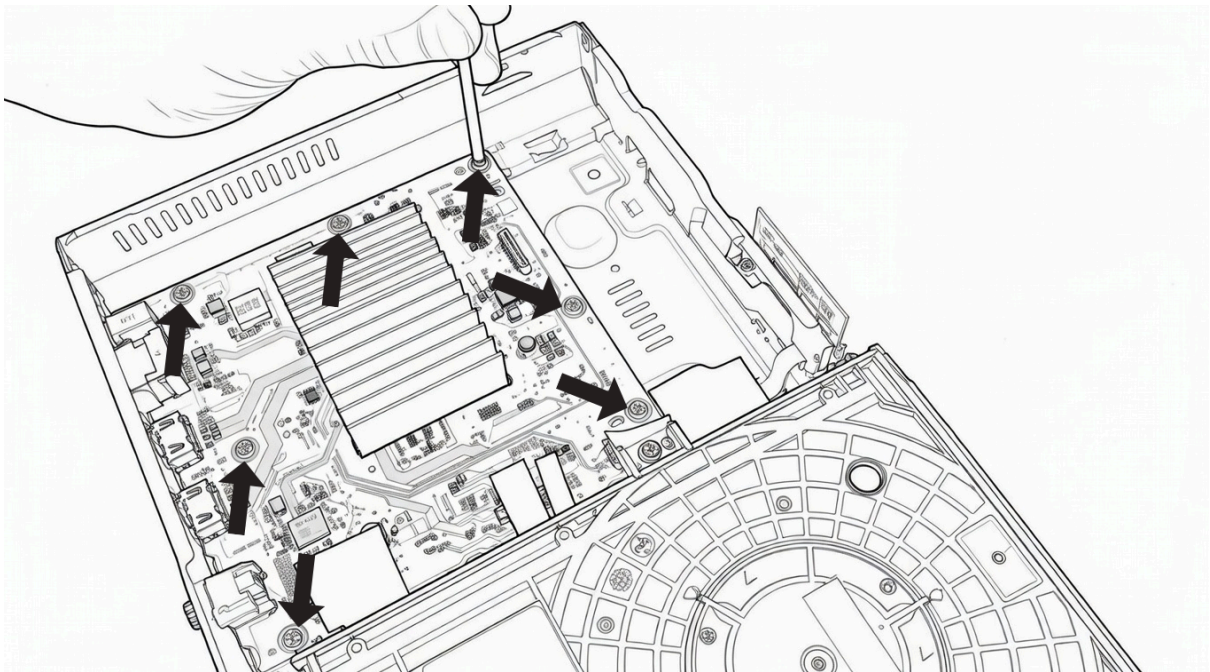
Once this is done, **turn the drive over** and locate the **ribbon cable** that holds the drive.



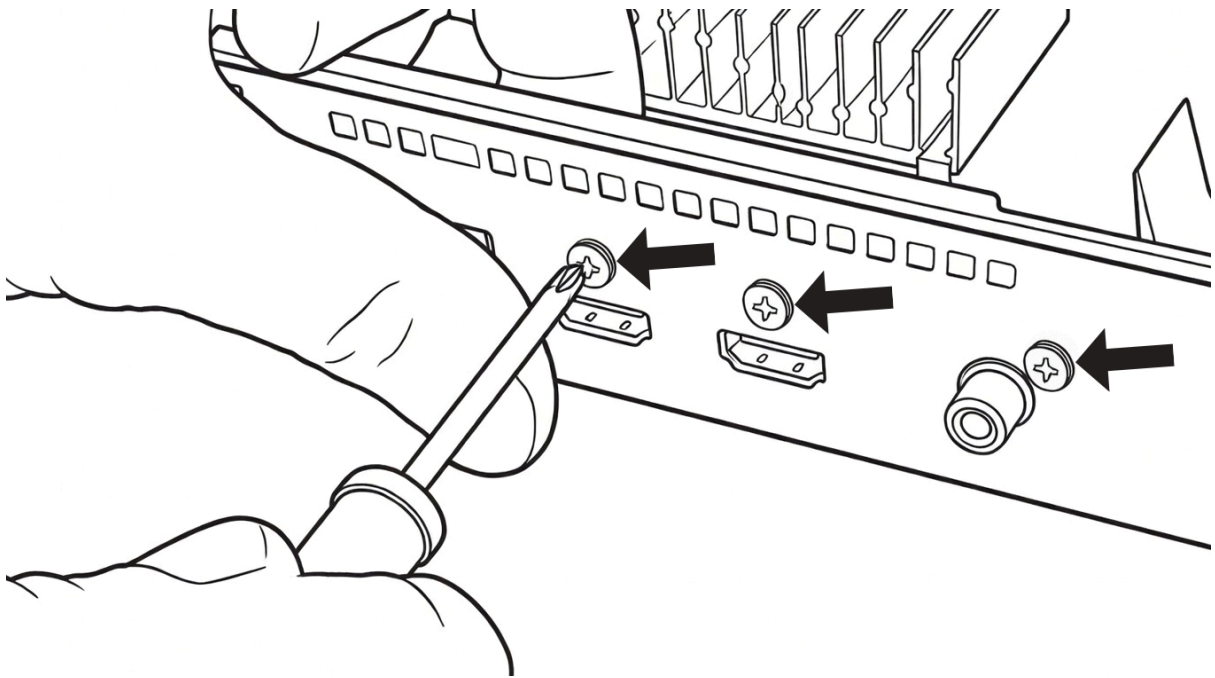
Then, **remove the ribbon cable** by pulling it upwards.



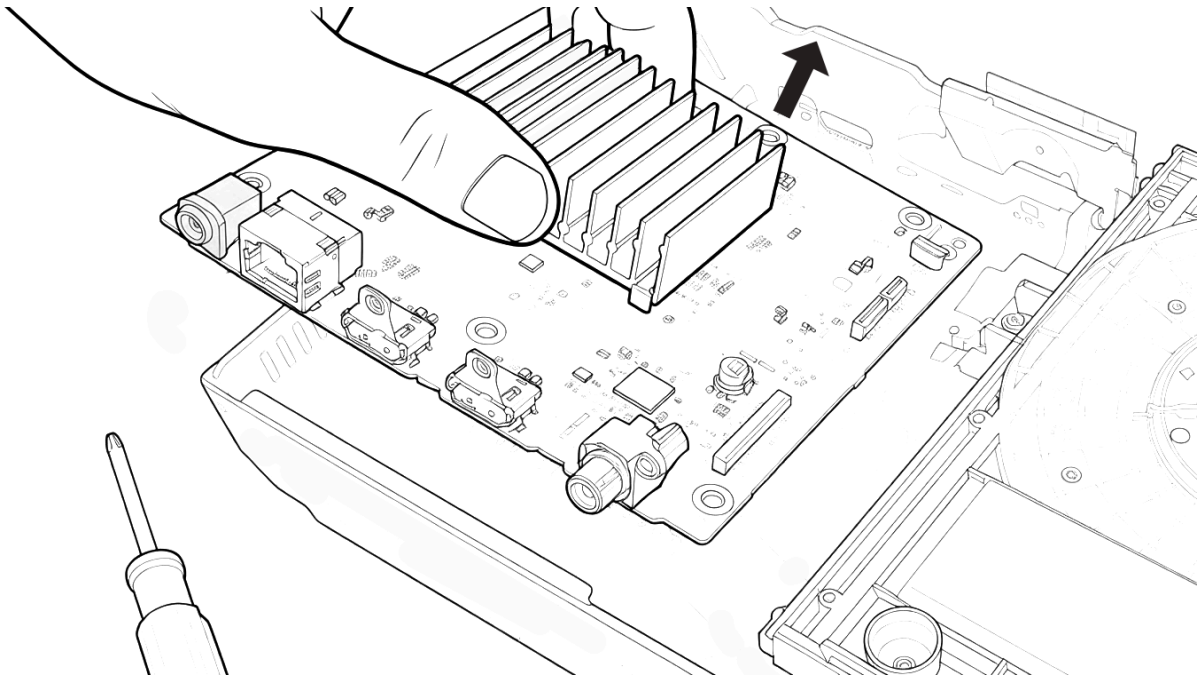
Then, **remove the other ribbon cables** by pulling them upwards.



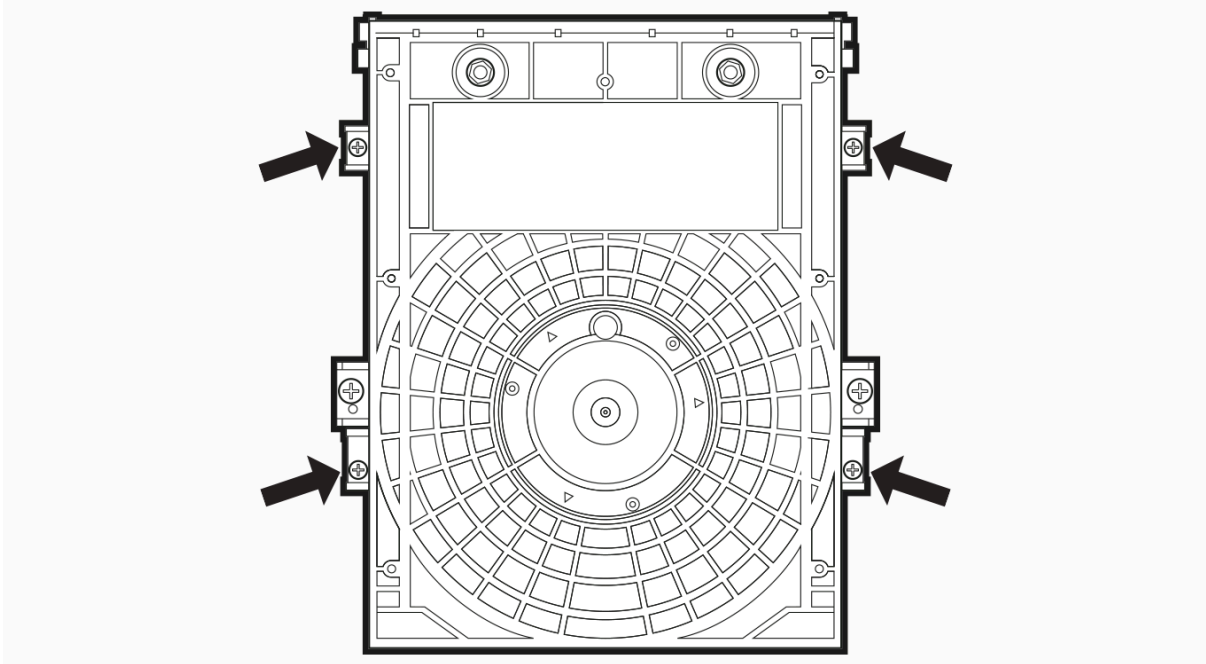
Then, **unscrew the 7 screws** indicated by the arrows in the diagram above using the **Phillips screwdriver**.



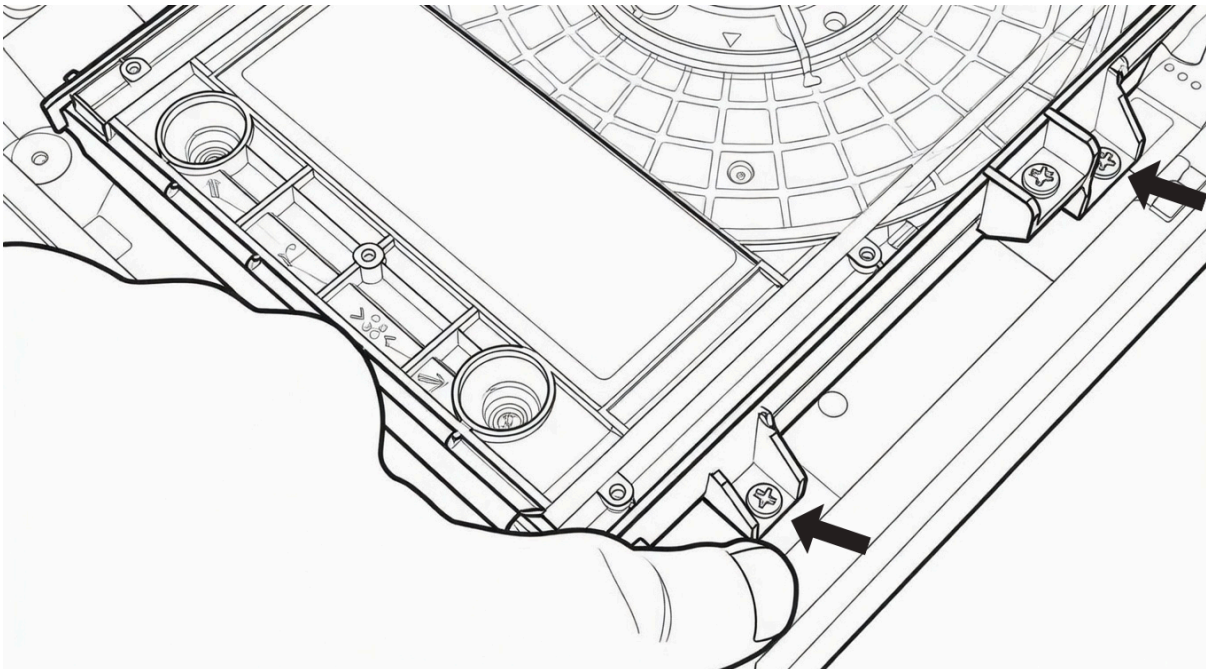
Then, at the back of the player, **unscrew** the **3 screws** indicated by the arrows in the diagram above (the **2 HDMI ports** and the **Coaxial port**).



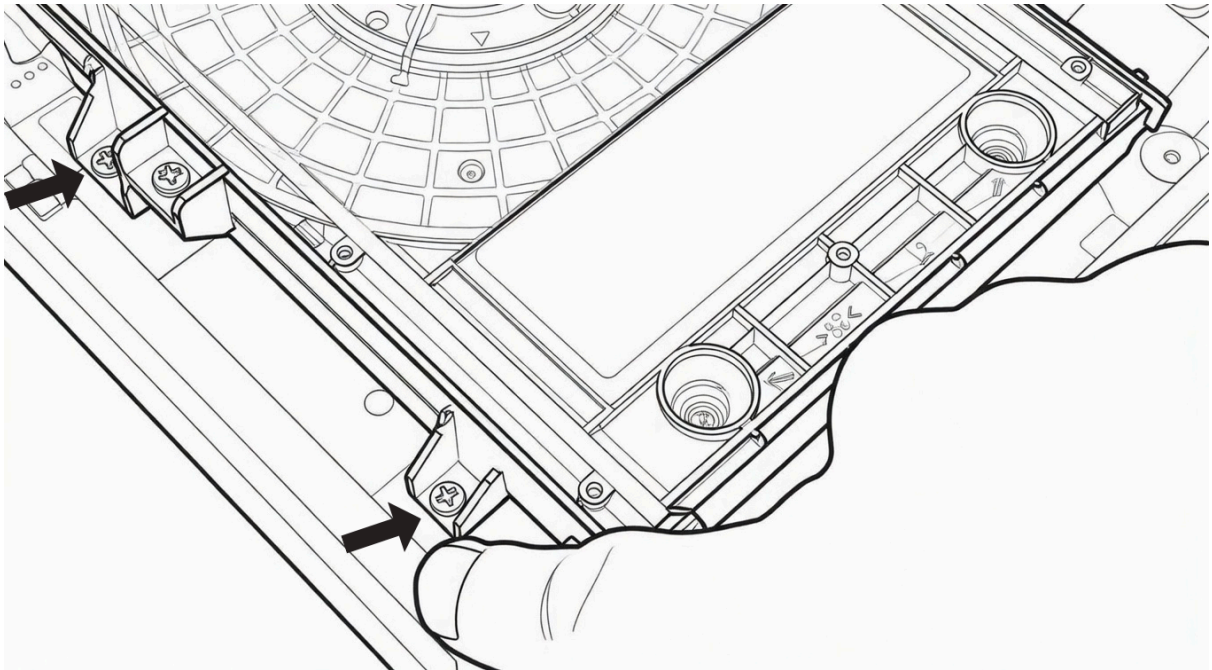
Next, **remove the motherboard** by **pulling it up** while holding it by the heatsink.



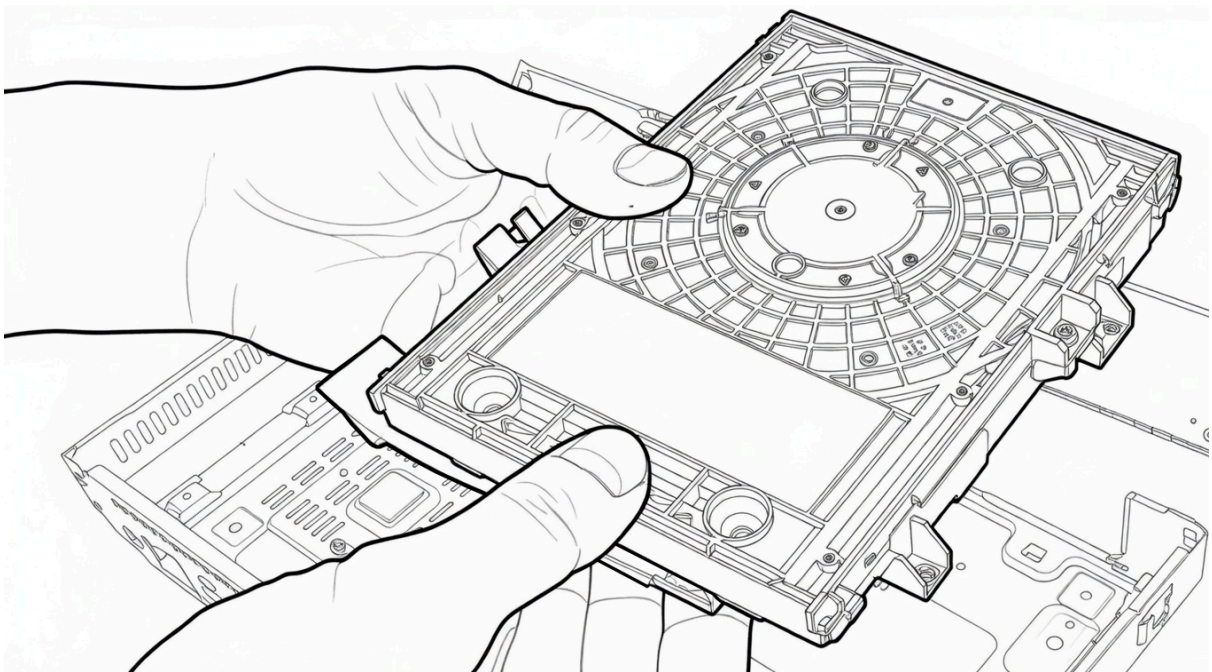
Then, **unscrew the 4 screws** that attach the optical drive unit to the chassis using the Phillips screwdriver.



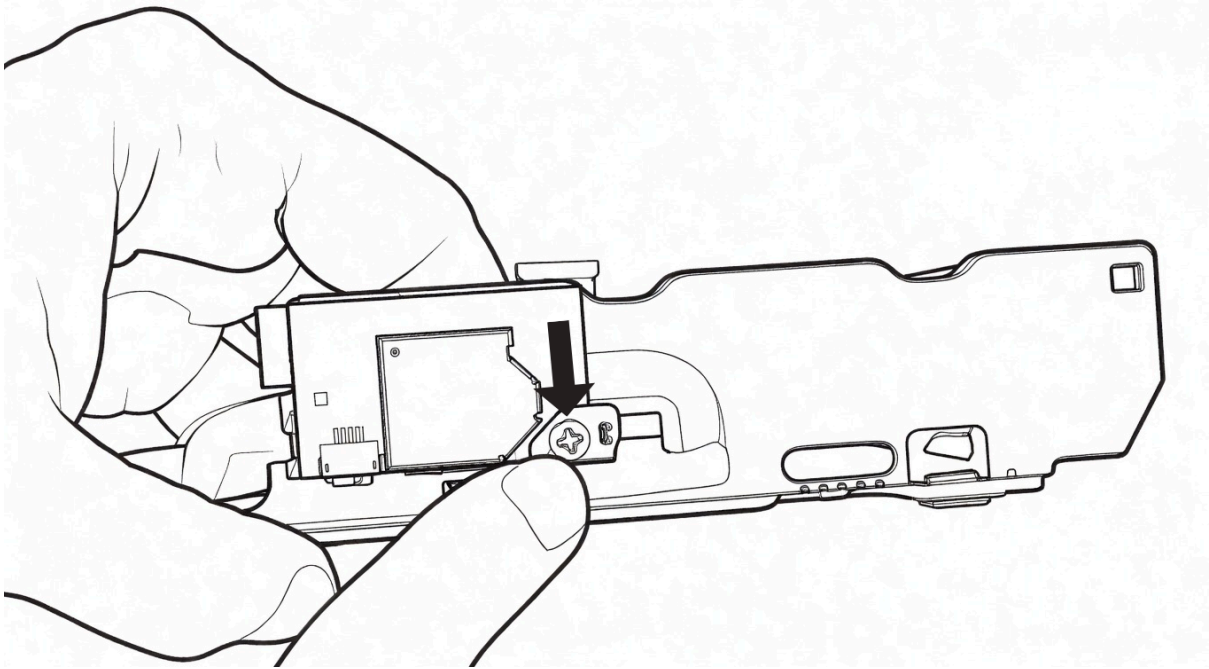
Start by **unscrewing the two screws** on the **right side** of the **optical drive unit**.



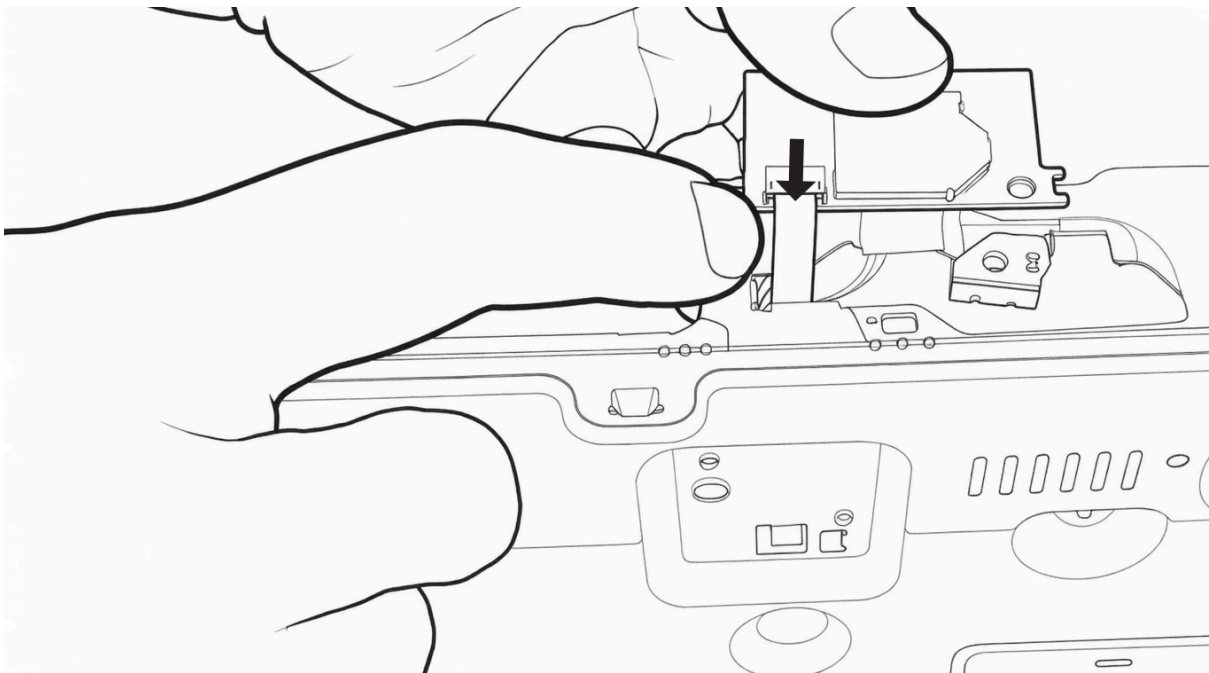
Then, **unscrew the 2 screws** on the **left side** of the **optical drive unit**.



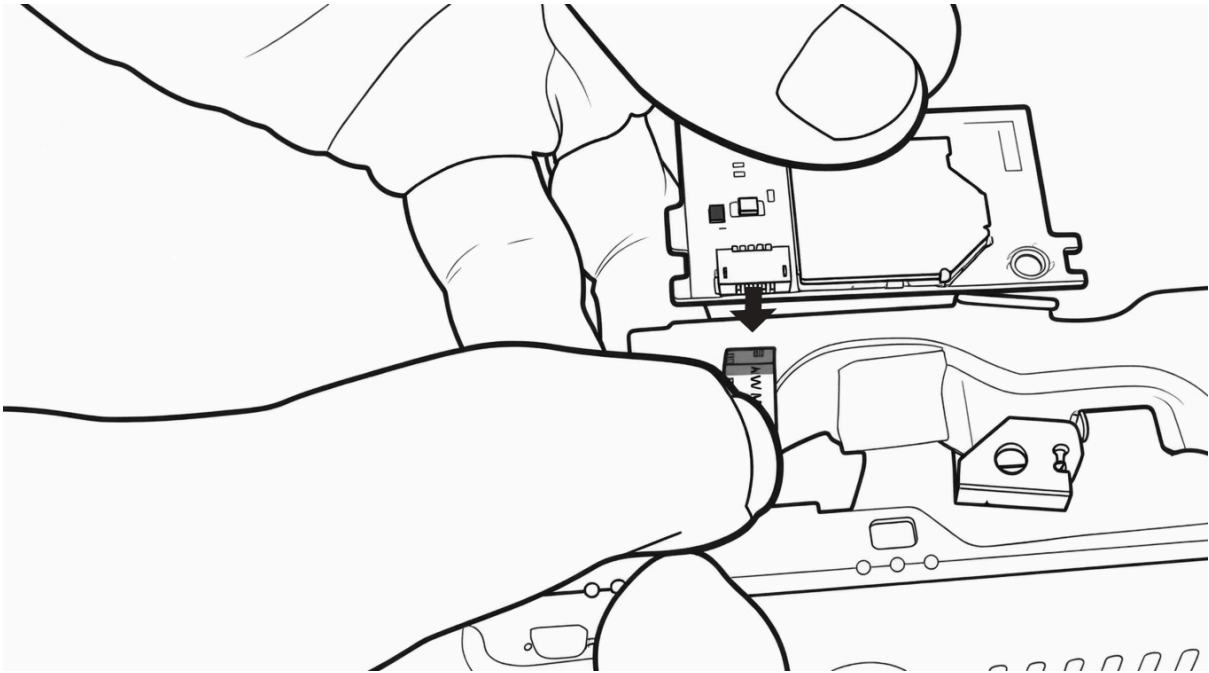
Once the 4 screws are removed, **take out the optical drive unit** from the Sony 4K UHD Blu-ray player chassis.



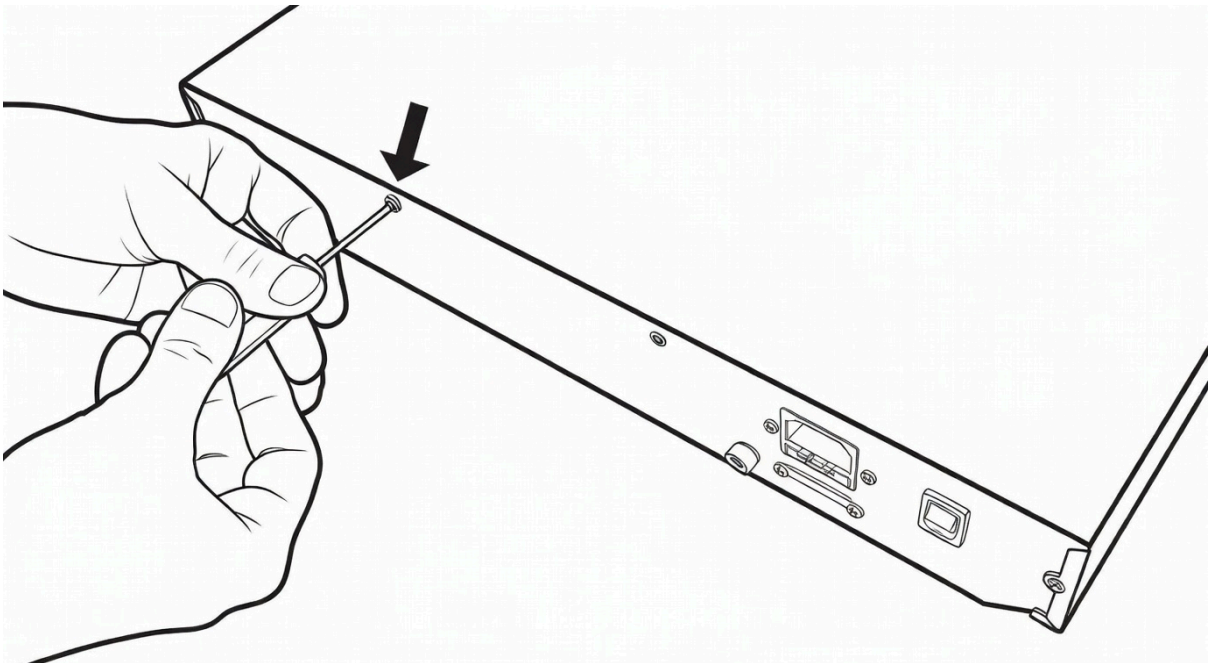
Then, using the Phillips screwdriver, **remove the screw** that secures the **Wi-Fi card** of the Sony player located on the right side of the Sony player's chassis. *This card is only present on certain versions of the Sony player.* If you do not see this card, proceed to the next step.



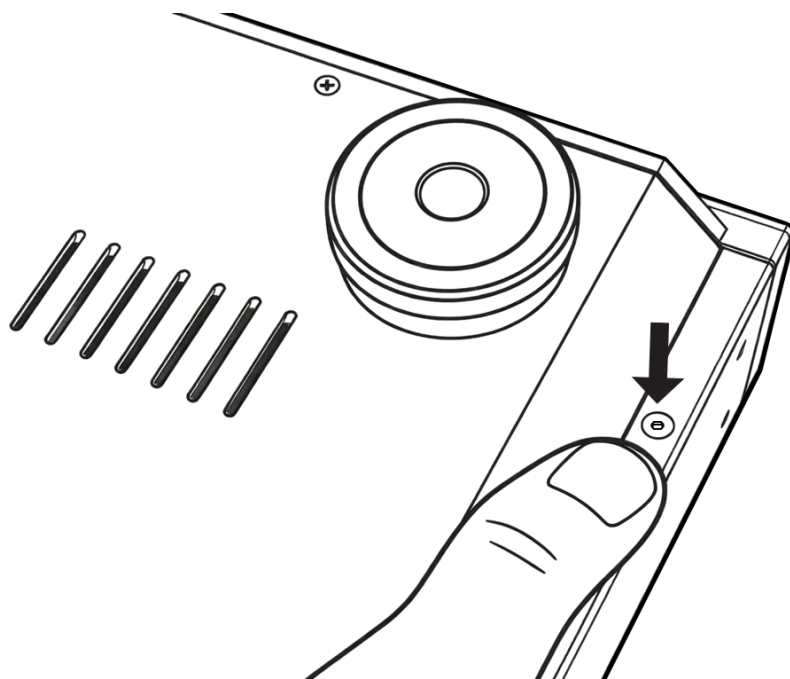
Remove the computer ribbon cable that connects the Wi-Fi card to the Sony player chassis.



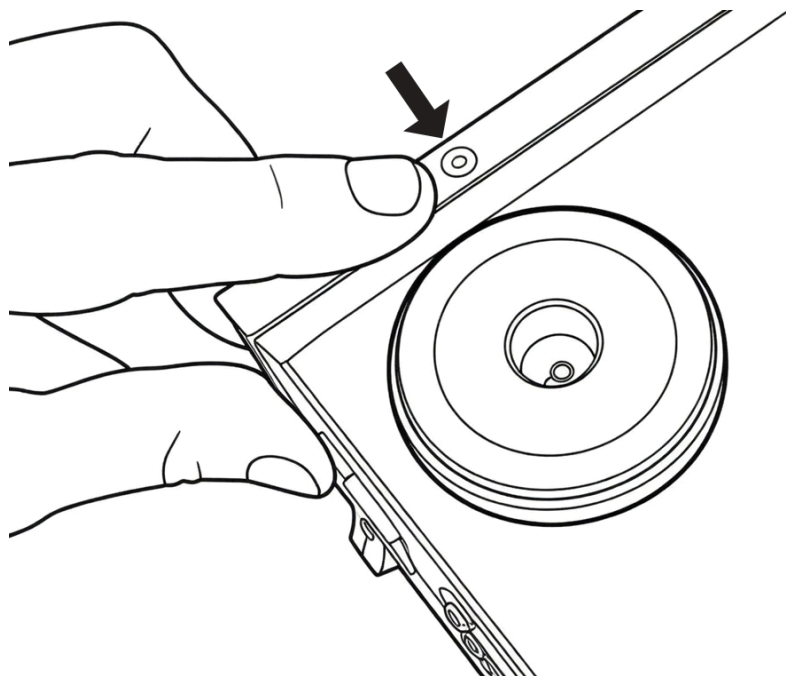
Use your thumb and index finger and **pull** on the **ribbon** to release it from the connector and free the **Wi-Fi card**. Then, set the card aside.



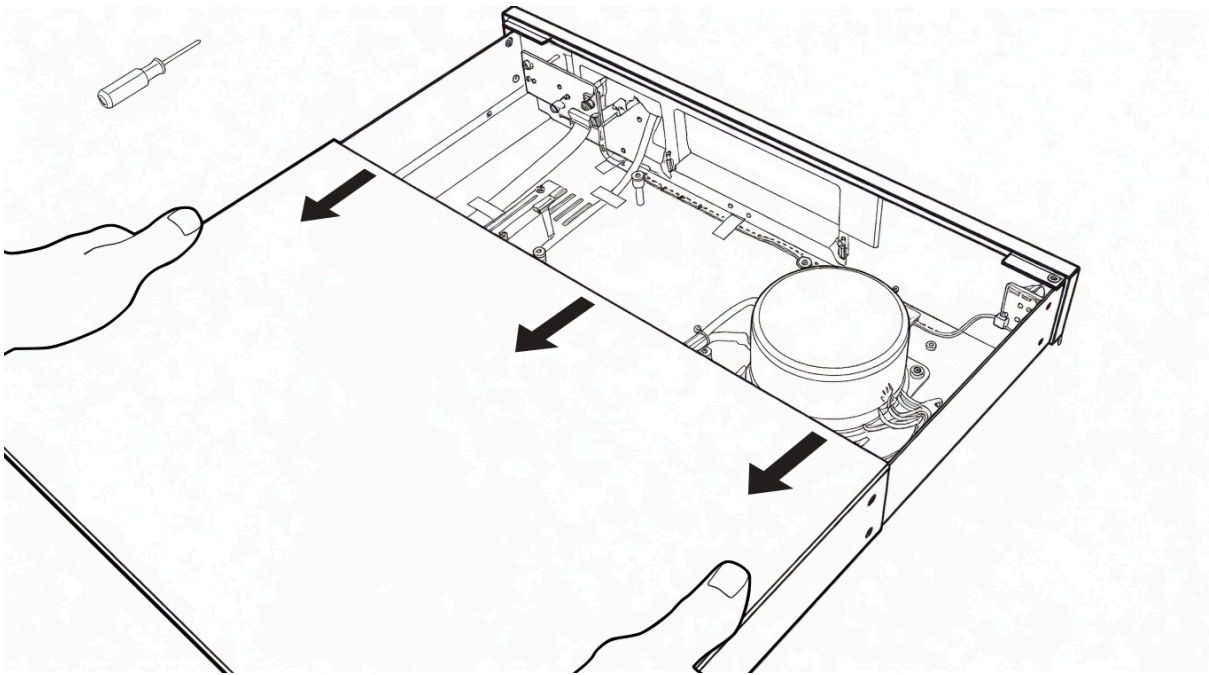
Locate the screw placed **at the back** of the Rvolution Chassis DIY-X700. Then, **unscrew it** using the Allen screwdriver.



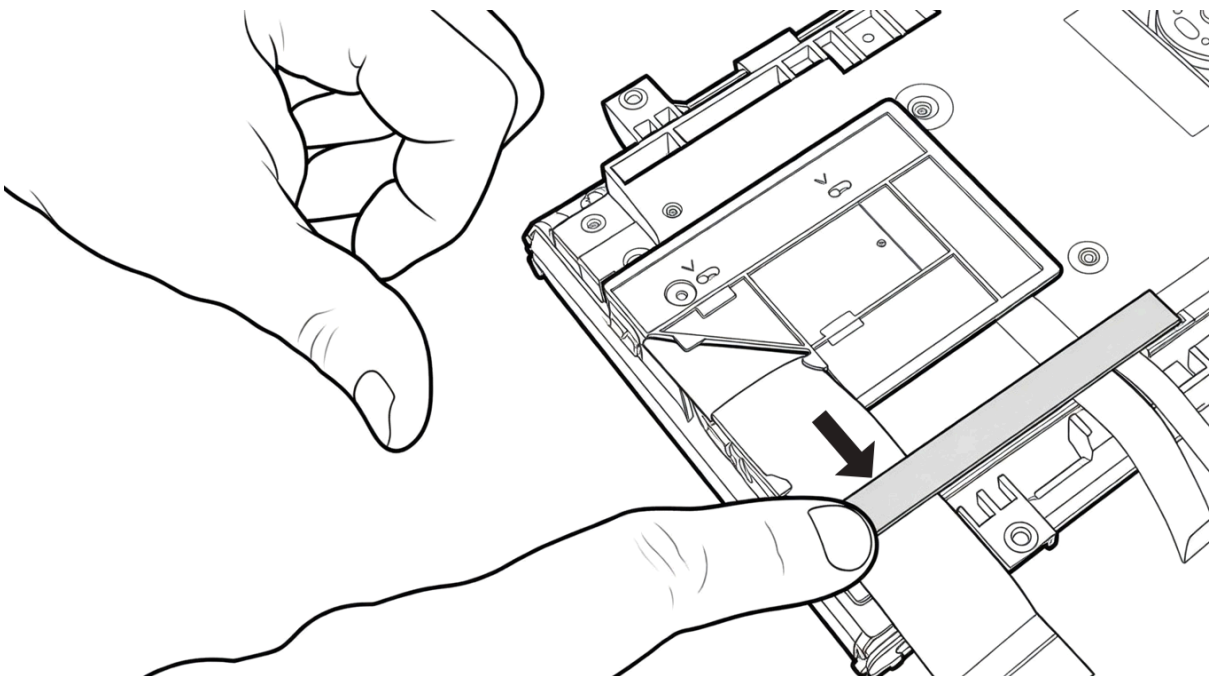
Then, **turn the player over** and **unscrew the screw** located on the **right leg**, near the front face, using the Allen screwdriver.



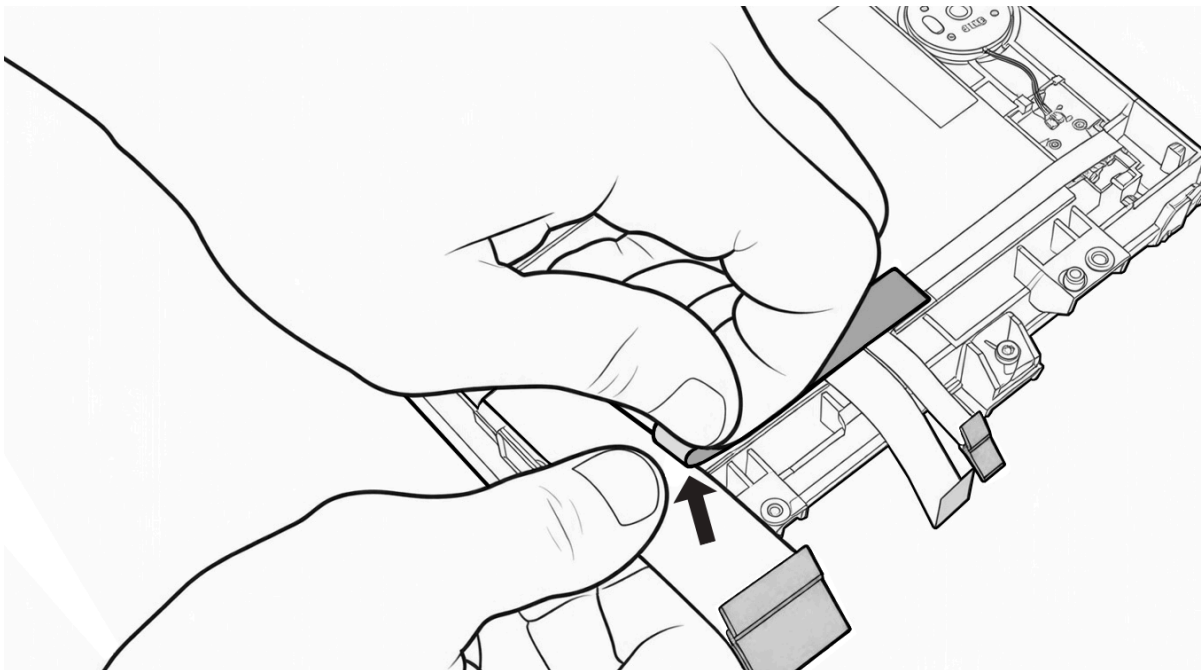
Then, locate the **screw** placed near the foot situated in the opposite corner and **unscrew it** using the Allen screwdriver.



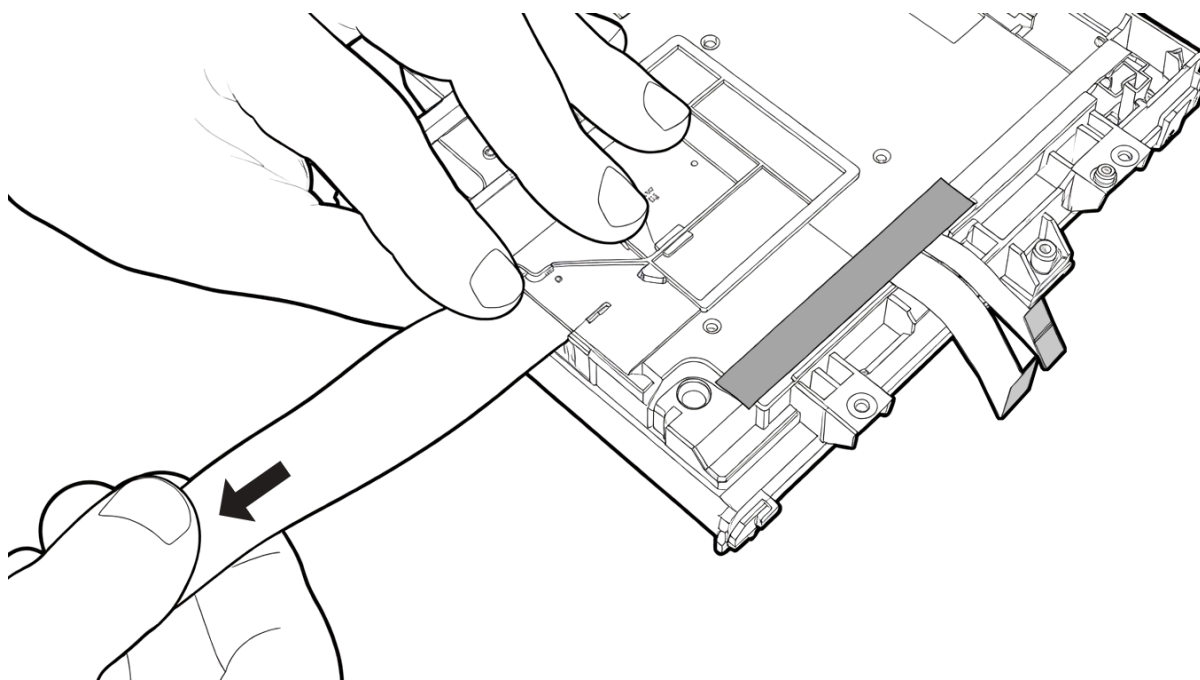
Turn the DIY-X700 chassis over and place it on its feet. Then, **remove the cover by pulling it backward.**



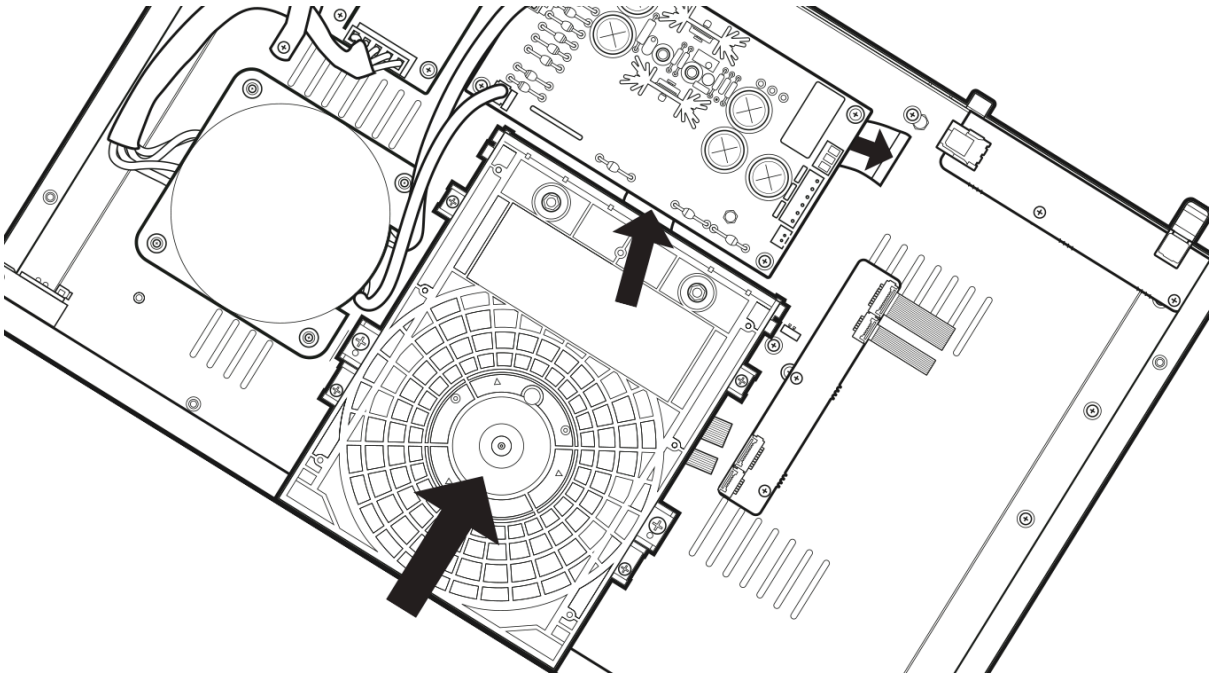
Then, **take the optical block** that you set aside earlier and turn it over. On the underside of the optical block, locate the **black tape strip** that secures the widest ribbon cable to the optical block.



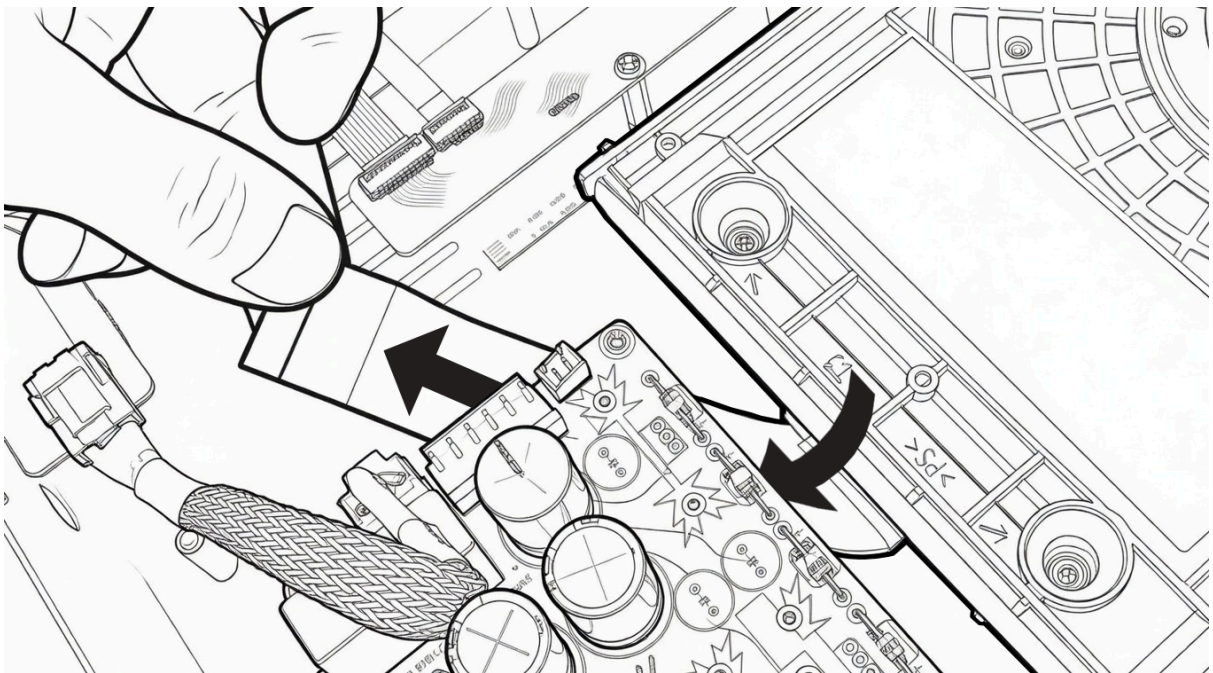
Remove it with the help of your thumb and forefinger.



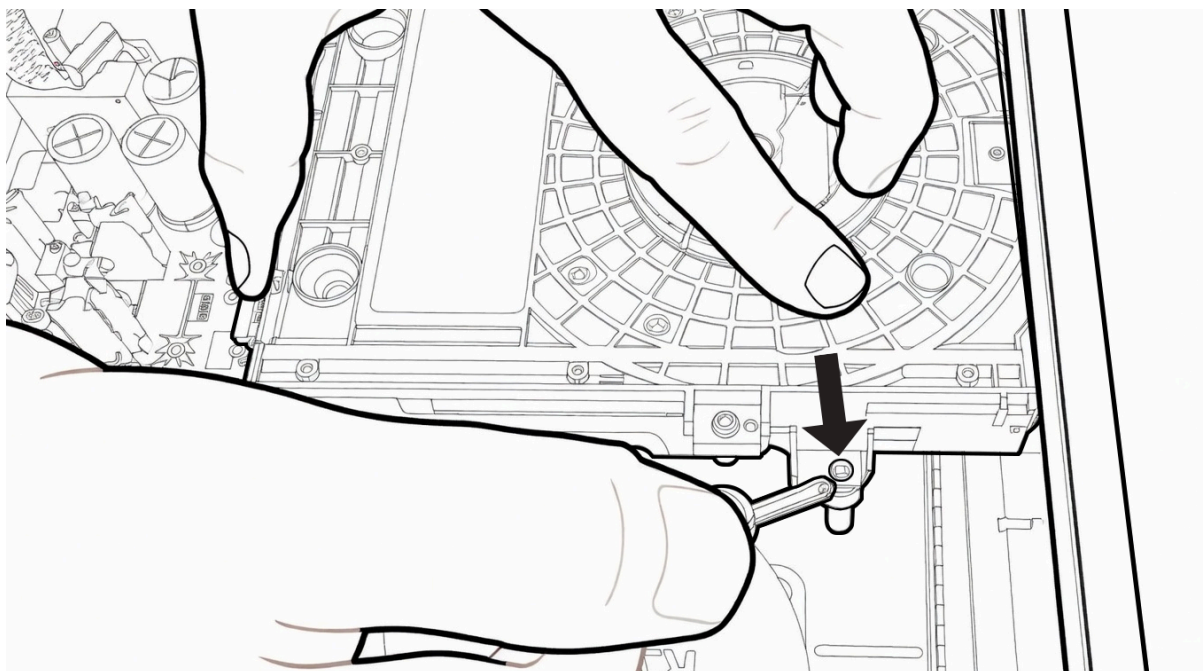
Once the cable is freed from the black adhesive, **gently pull on the cable to flatten it.**



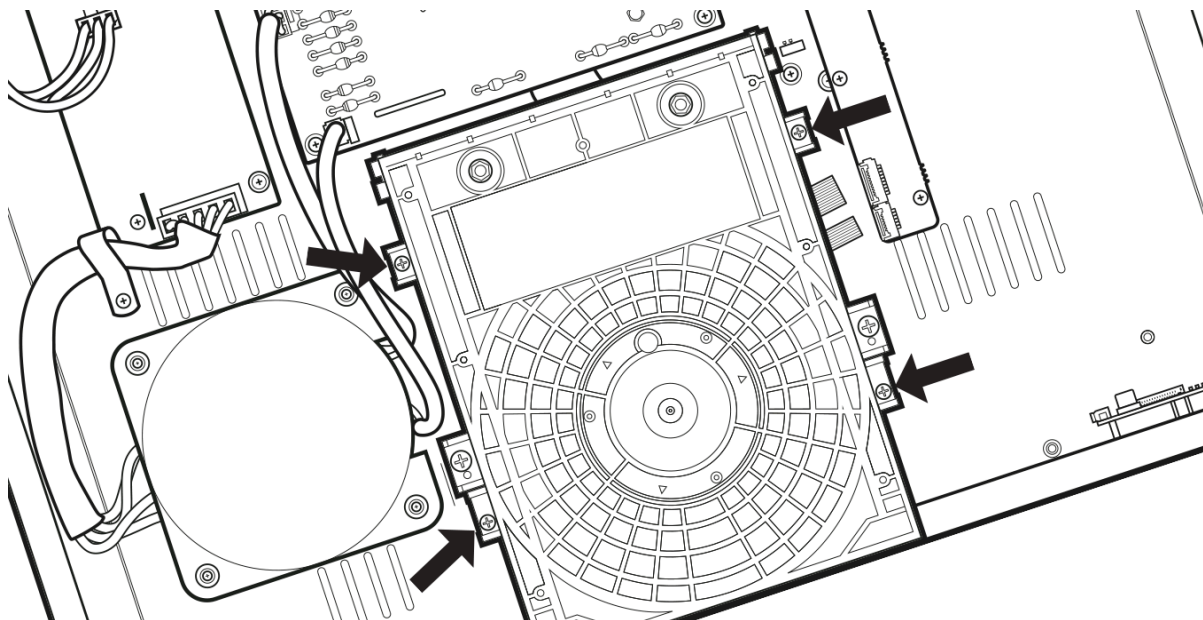
Next, **turn the optical block over** and **pass the ribbon cable under the electronic board** with the large capacitors and place the optical block in its position.



Pull the cable well so that it comes out properly from under the circuit board. Then, place the optical block correctly in its position.

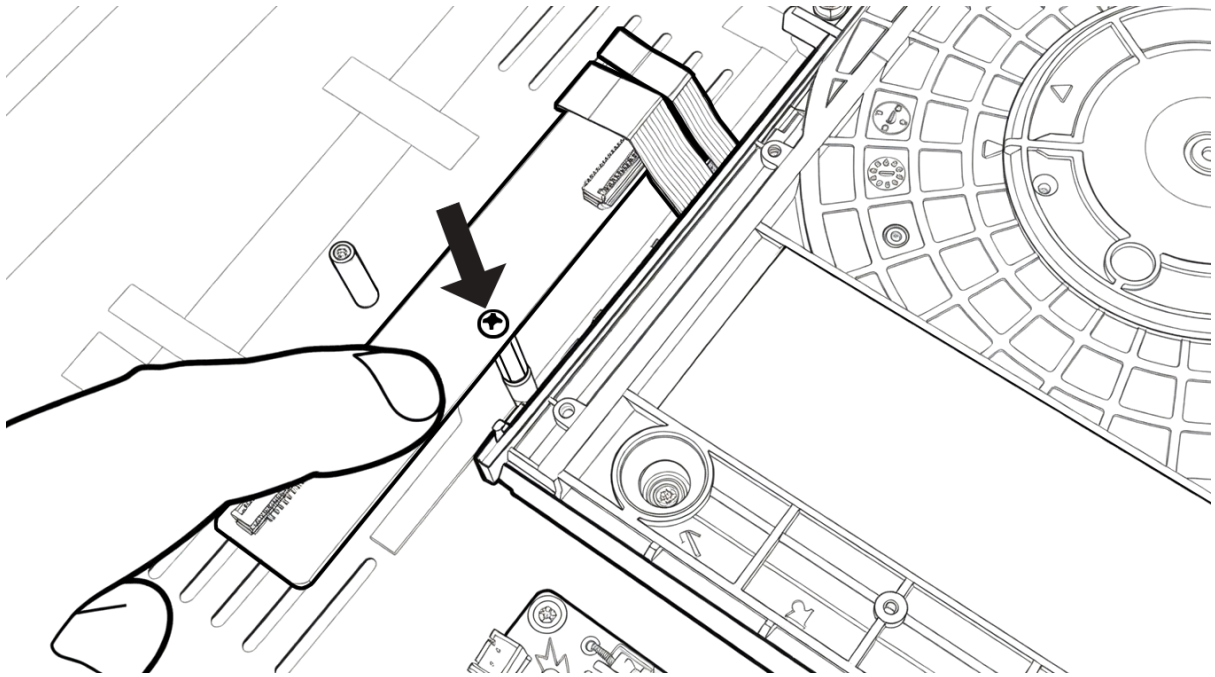


Then, using the Phillips screwdriver, **screw the optical block** in place using the screws from **bag number 1**.

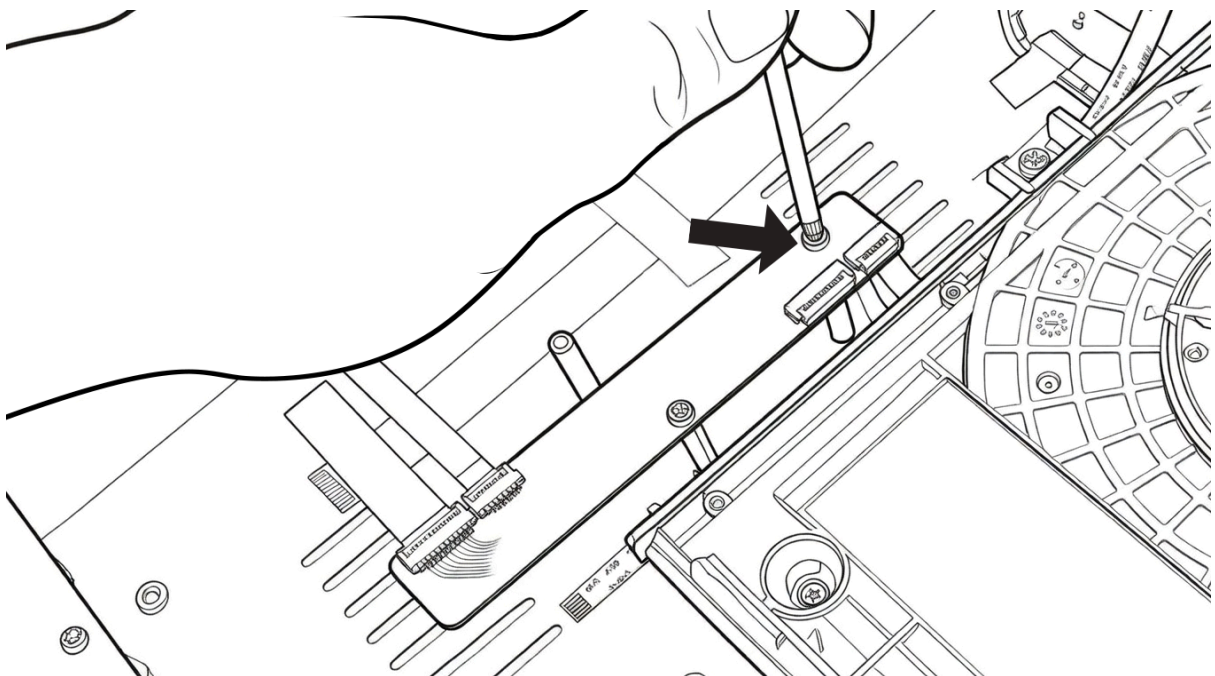


Respect the screw locations as indicated above and take care to screw the optical block in properly so that it does not move from its position and does not vibrate during playback.

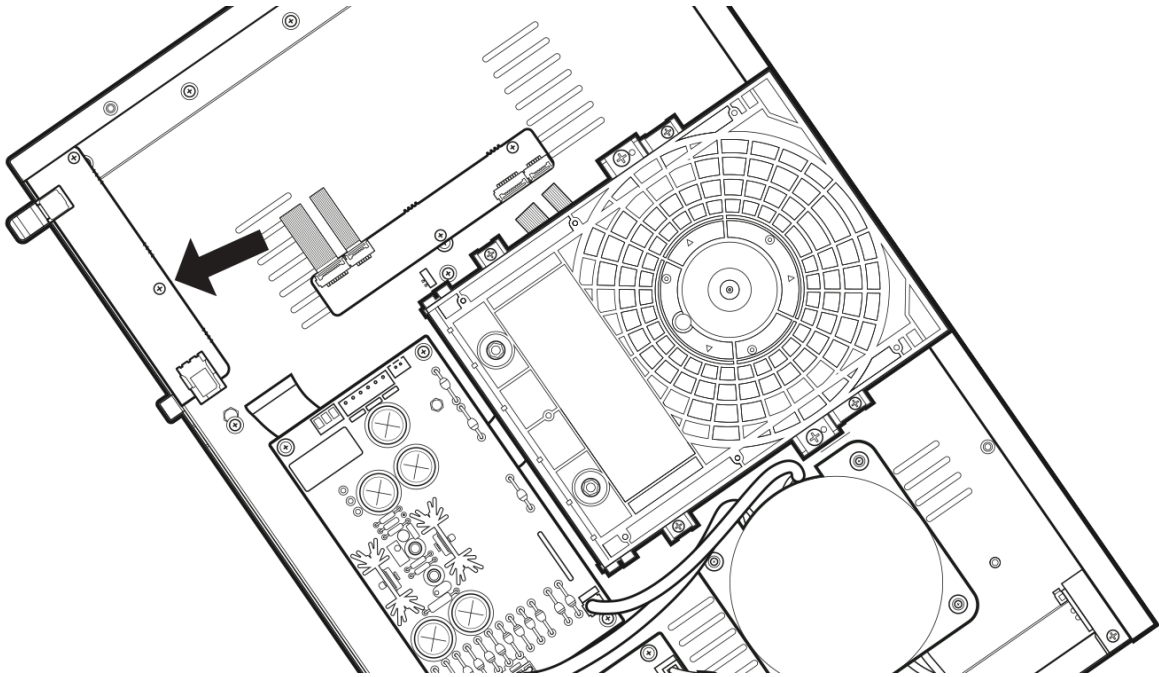
Note that the optical block is mounted on an anti-vibration system to improve reading quality compared to the original Sony player.



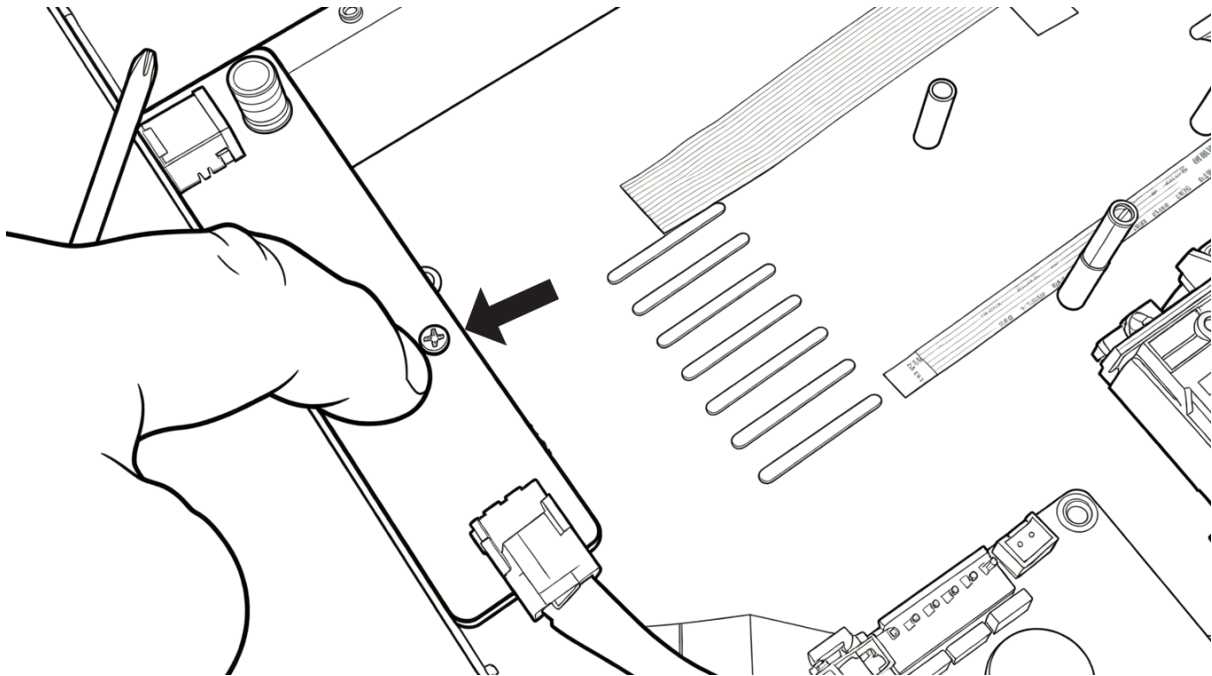
Then, **unscrew the small raised card** positioned next to the optical block using the Phillips screwdriver.



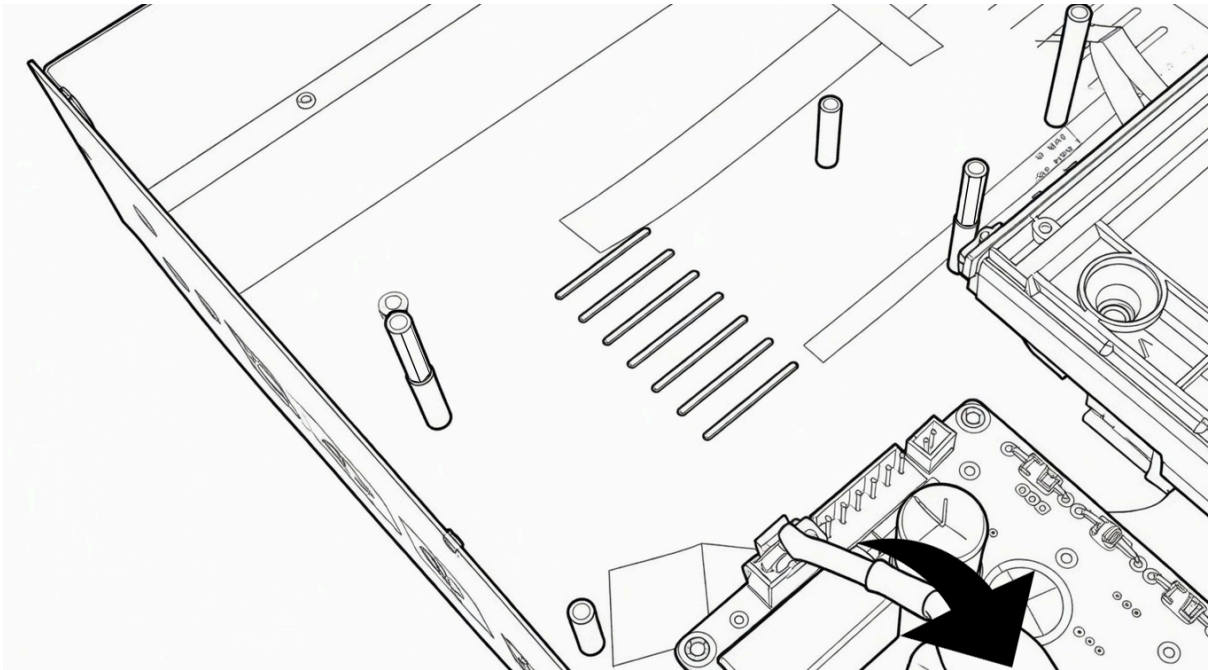
There are **2 screws to unscrew** using the Phillips screwdriver. Then, **remove the card** and set it aside. We will need it later.



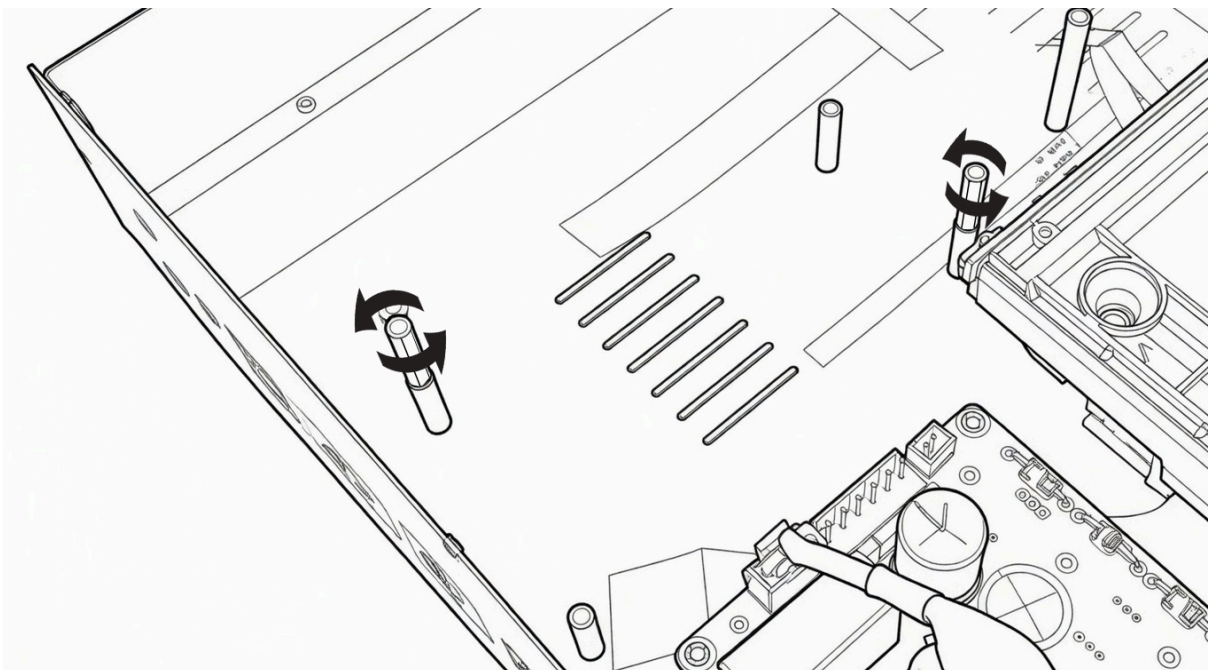
Next, you need to **unscrew the card** that is located at the position indicated by the arrow above.



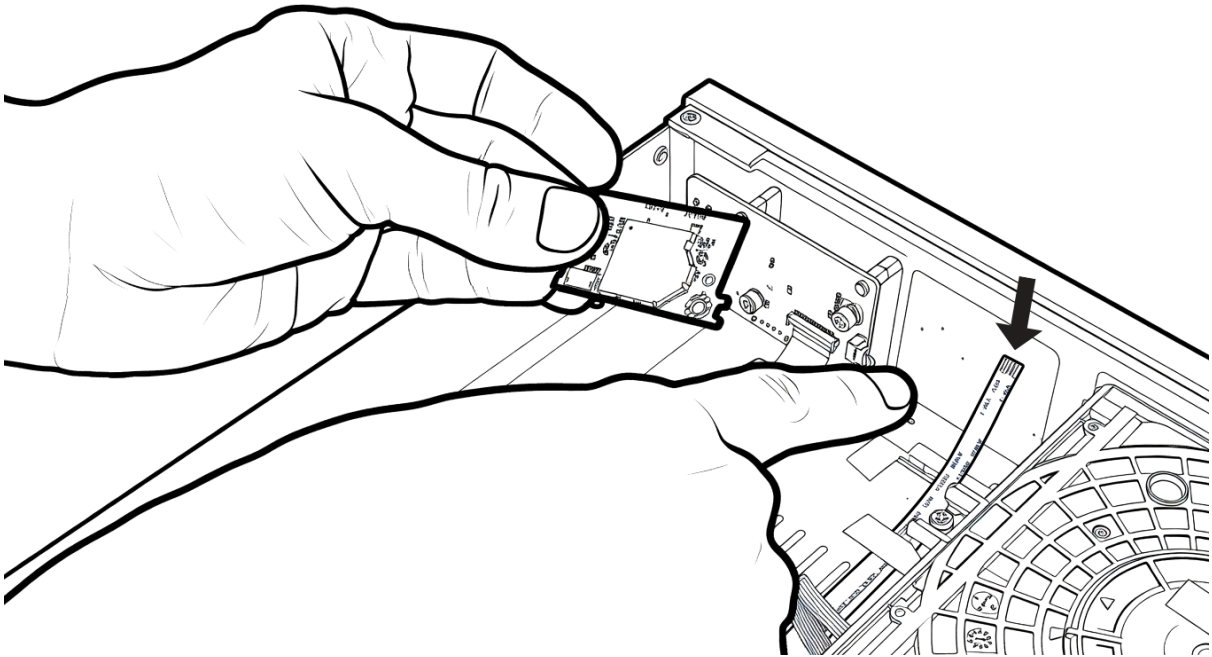
There is **only one screw to unscrew** using the Phillips screwdriver.



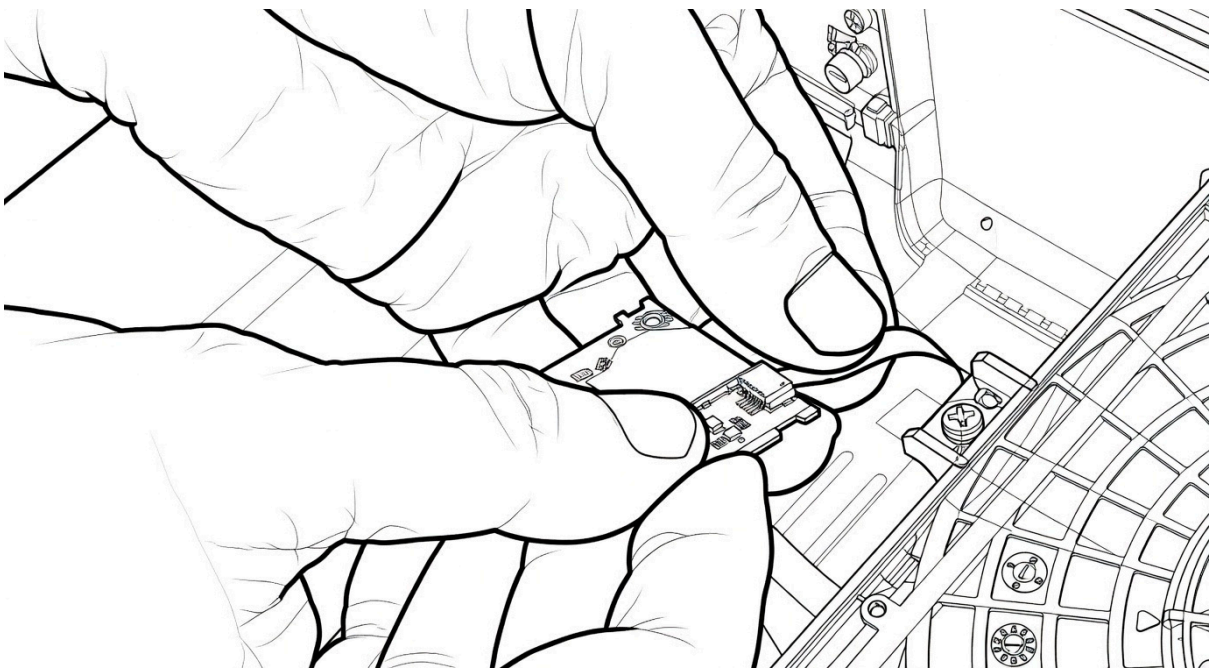
Then, **put the card on the side** (above the electronic board and **without disconnecting** it from its cable).



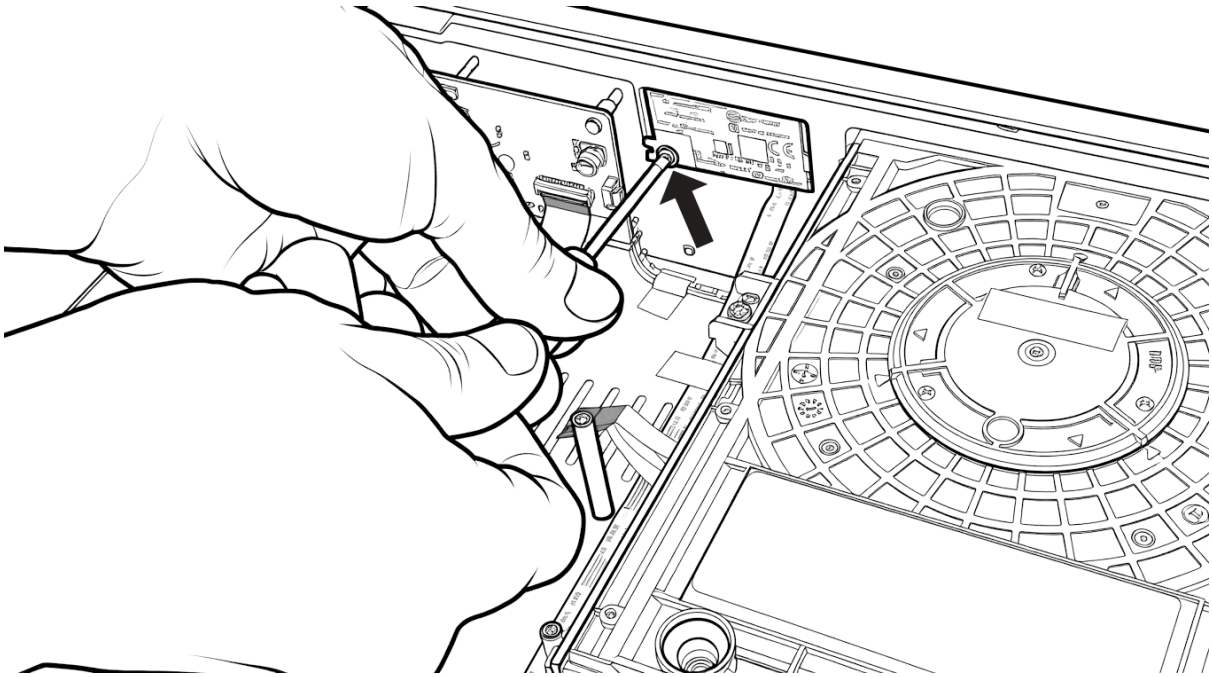
Then, **unscrew the two spacers** as shown in the diagram above.



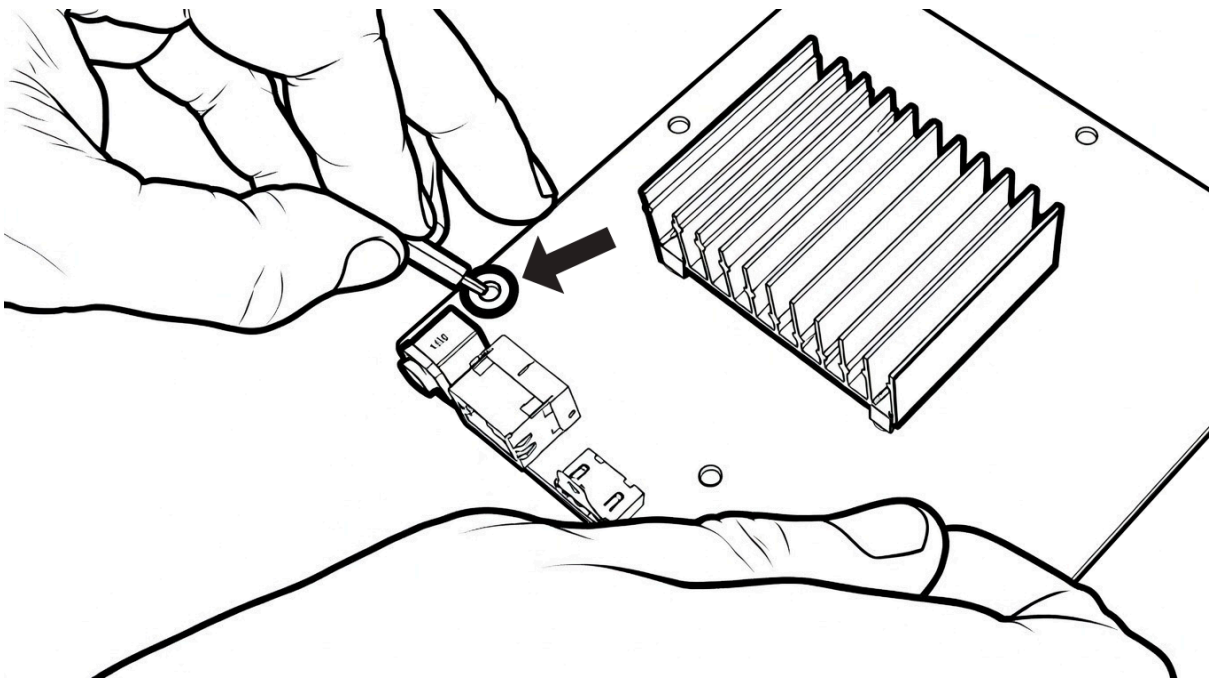
If your Sony player is Wi-Fi compatible, you should previously have removed the Wi-Fi card from the chassis of the Sony player. **Retrieve the Wi-Fi card** that was set aside. In the R_olution Chassis DIY-X700, **locate the small ribbon cable that goes to the front panel**.



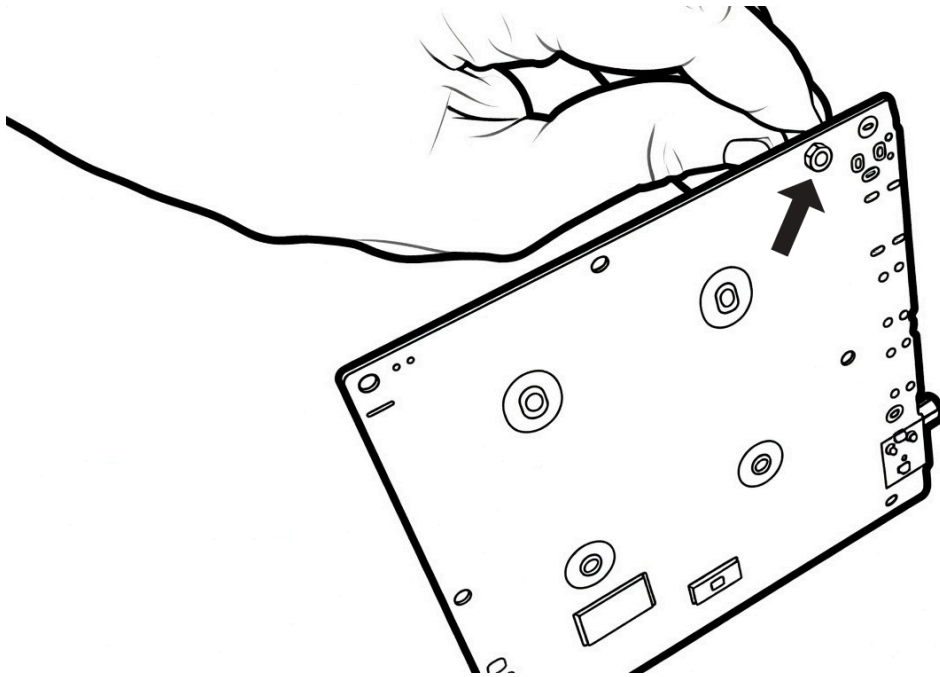
Then, connect the ribbon cable to the **Wi-Fi card**.



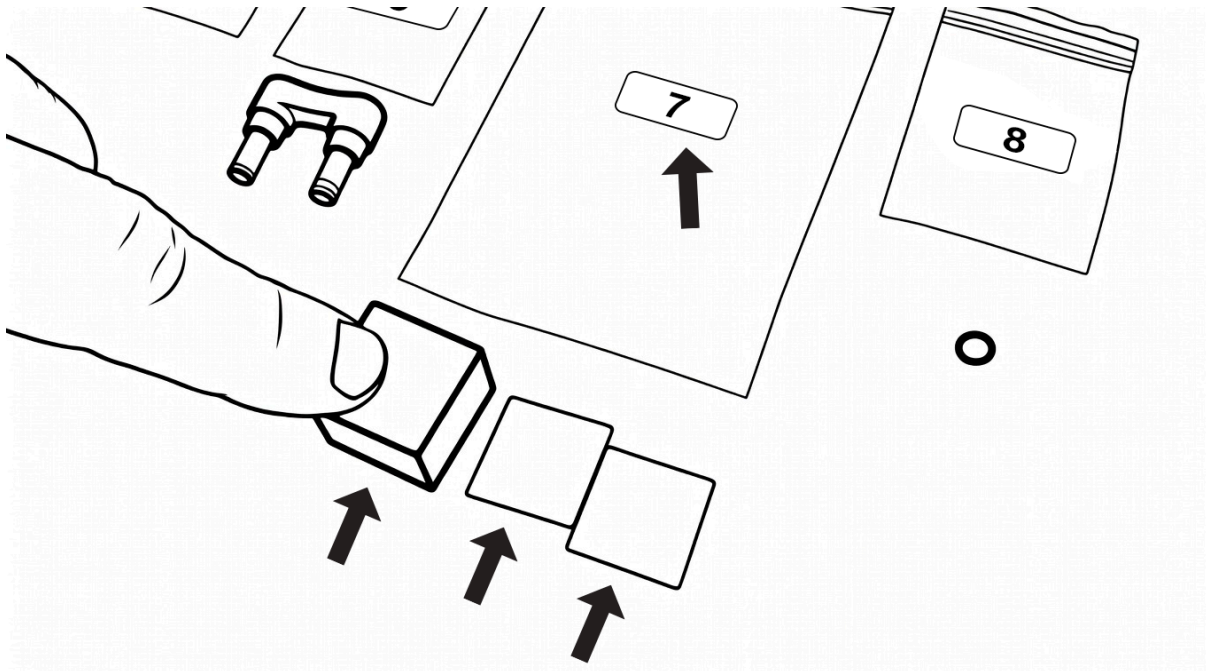
Then, **screw the Wi-Fi card** onto the front panel with a screw from **bag number 8** using a Phillips screwdriver. **WARNING! It is essential to use a screw from bag number 8! Using a different screw could damage the front of the chassis.**



Next, **retrieve the motherboard** from the Sony player along **with the spacer** and the bolt from **bag number 5**. Then, **insert the spacer** into the hole as shown in the diagram above.

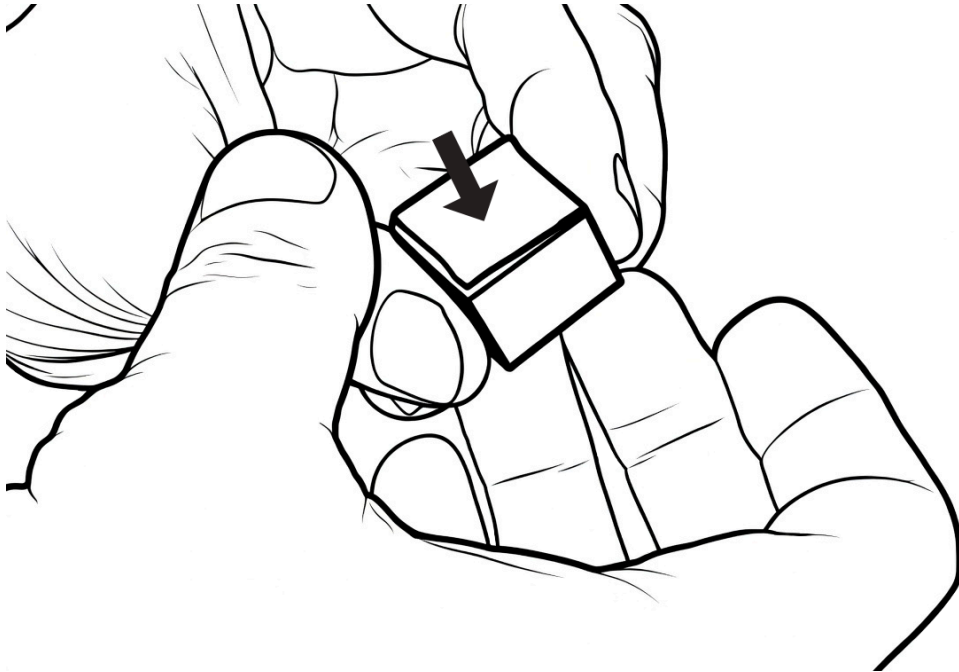


Then, **turn the card over** and screw the **bolt** onto the **spacer**.



When this is done, take the items from **bag number 7**:

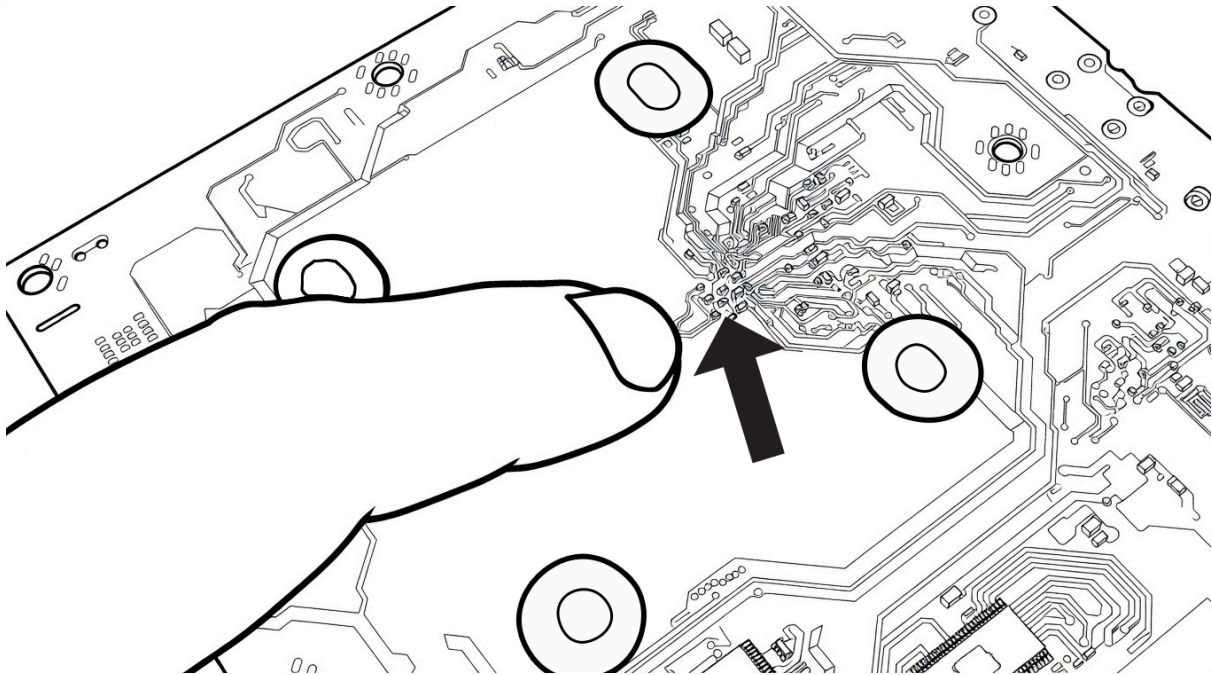
- 1 black cube
- 2 white thermal pastes



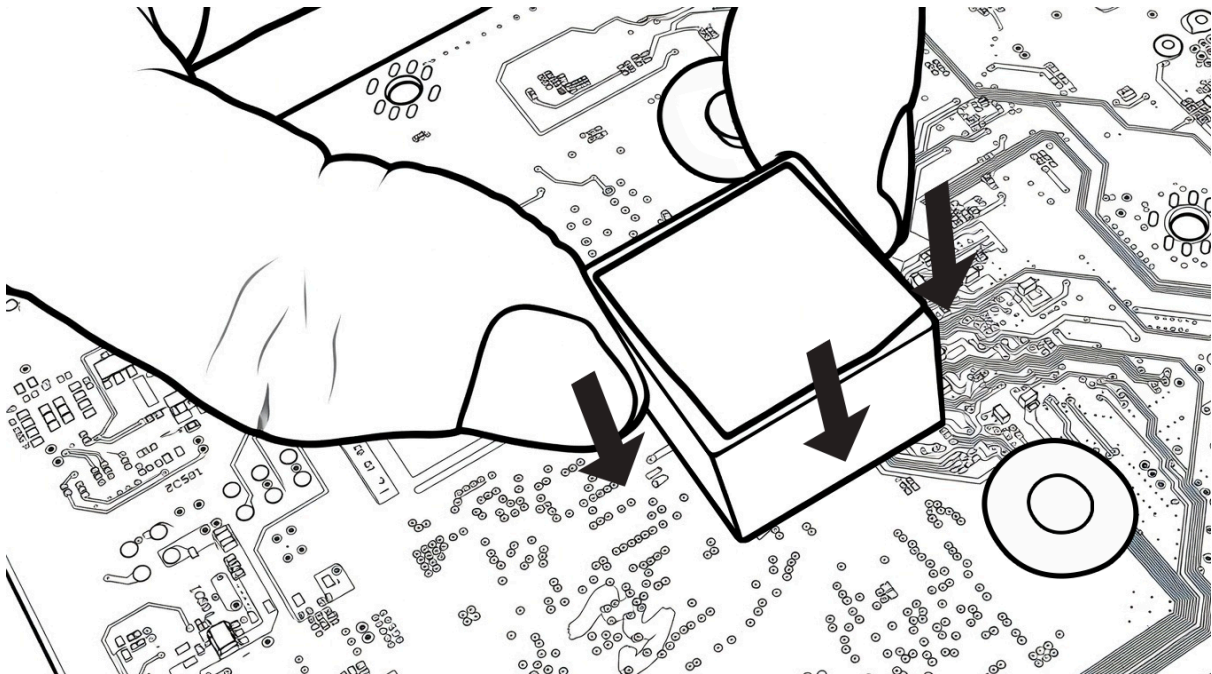
Take the cube and place the first thermal paste on one of the faces.



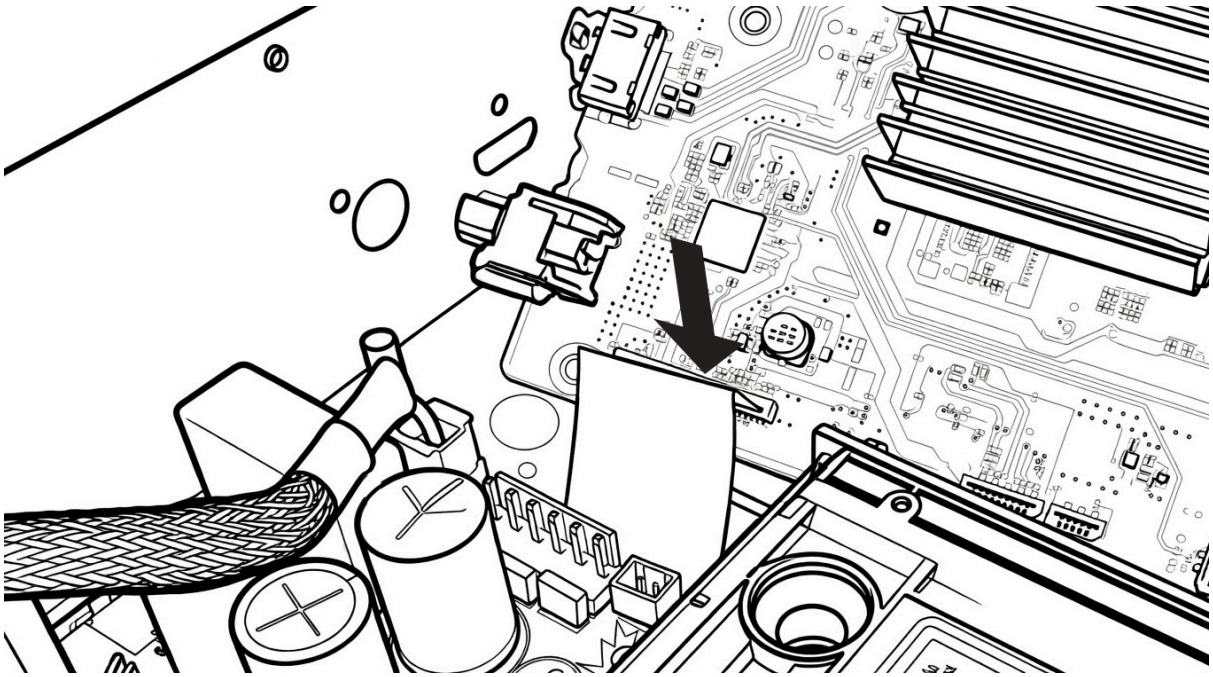
Then, turn the cube 180 degrees, and place the second thermal paste on the face opposite the first one. In the end, you will have thermal paste on two opposite faces of the black cube.



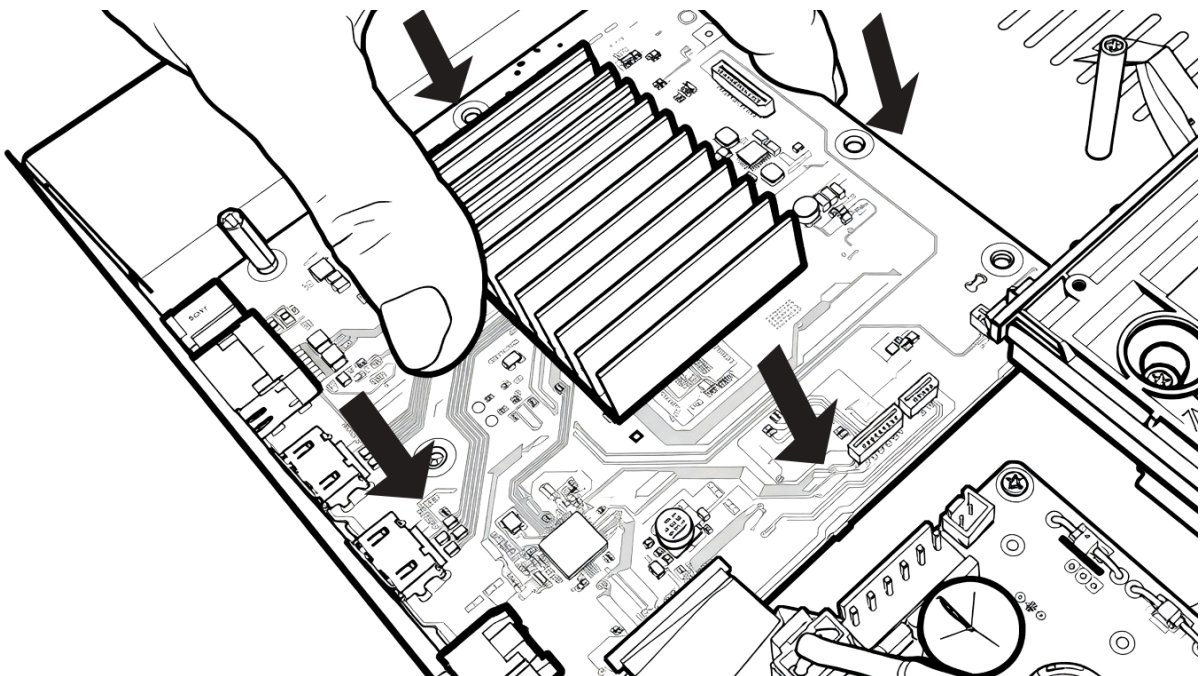
Locate the **semiconductor group** situated between the 4 large solder joints.



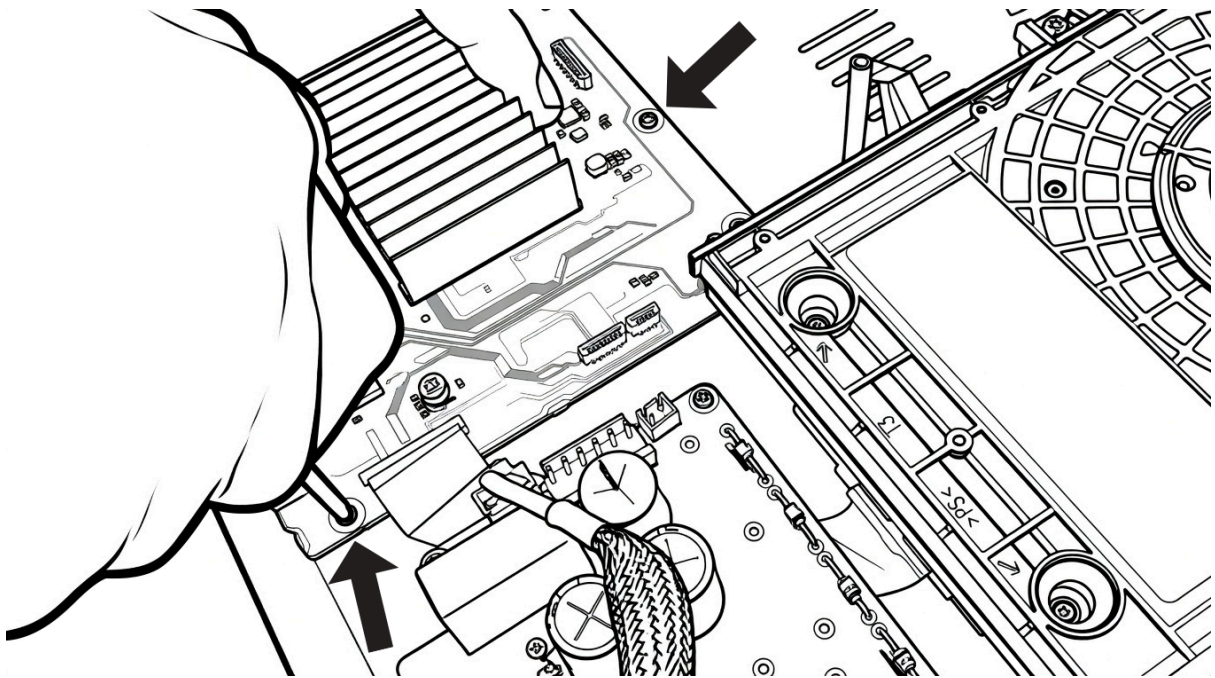
Then, **place the cube there, thermal paste side down, and press firmly.**



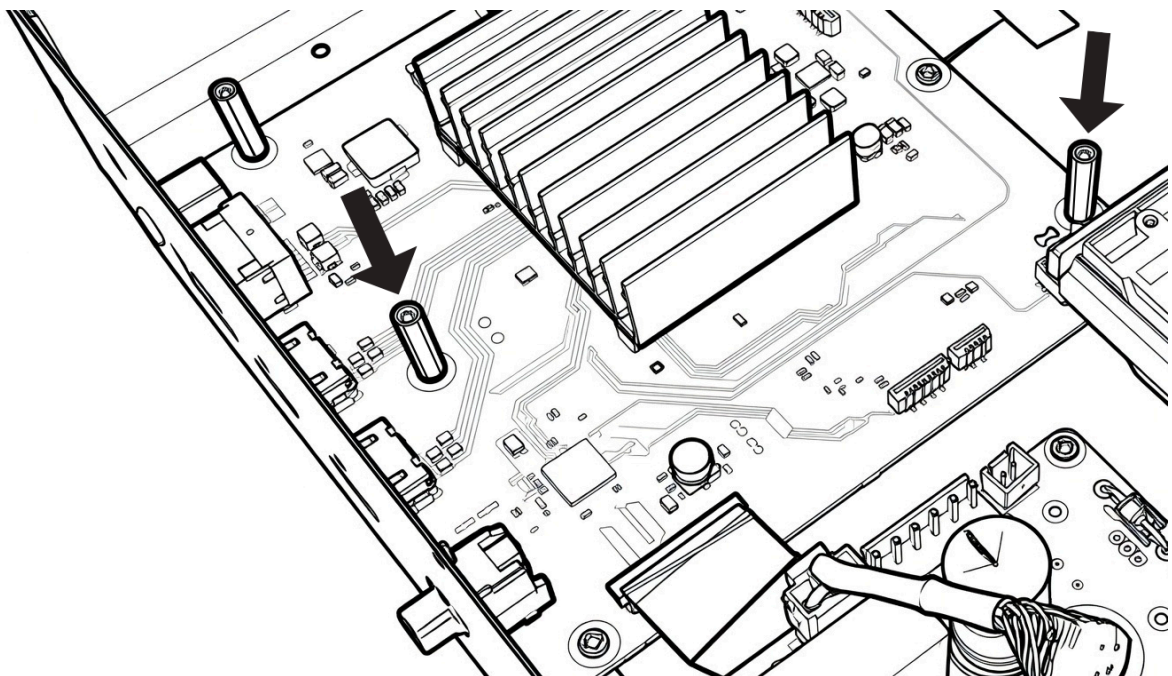
Turn the motherboard over and place it in the R_revolution chassis, then connect the cable coming from the optical drive that passes under the electronic board.



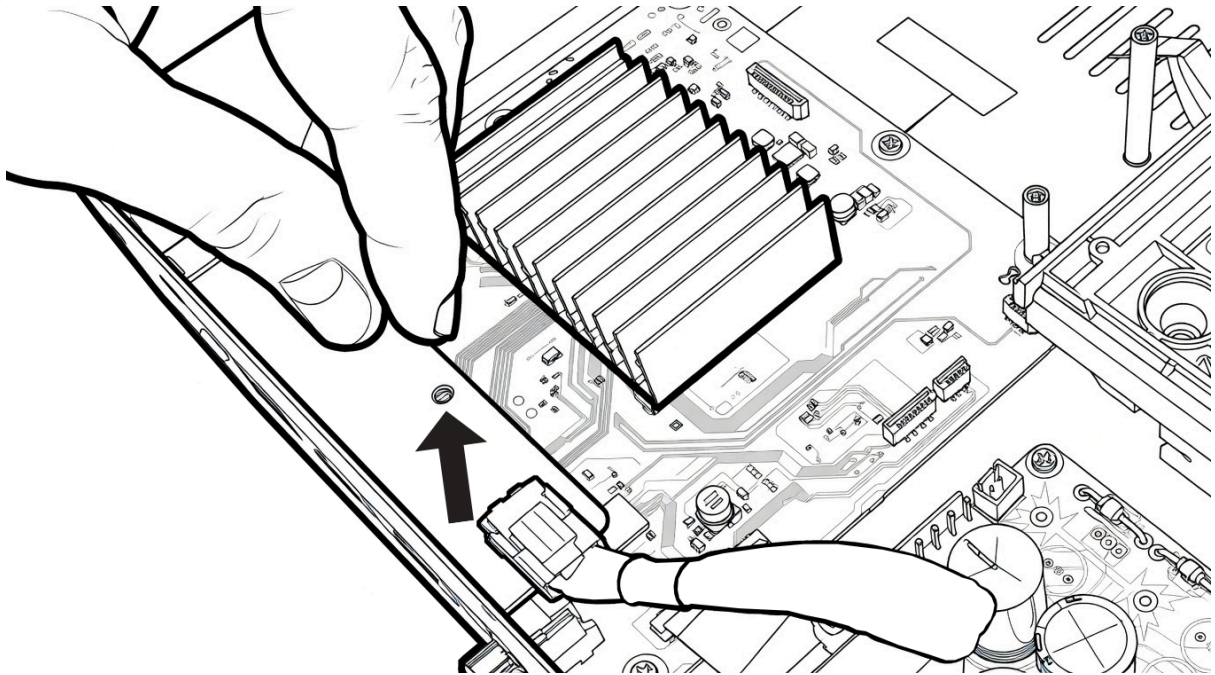
Then, place the motherboard in its slot, making sure to position the HDMI connectors in the dedicated holes on the rear of the R_revolution chassis.



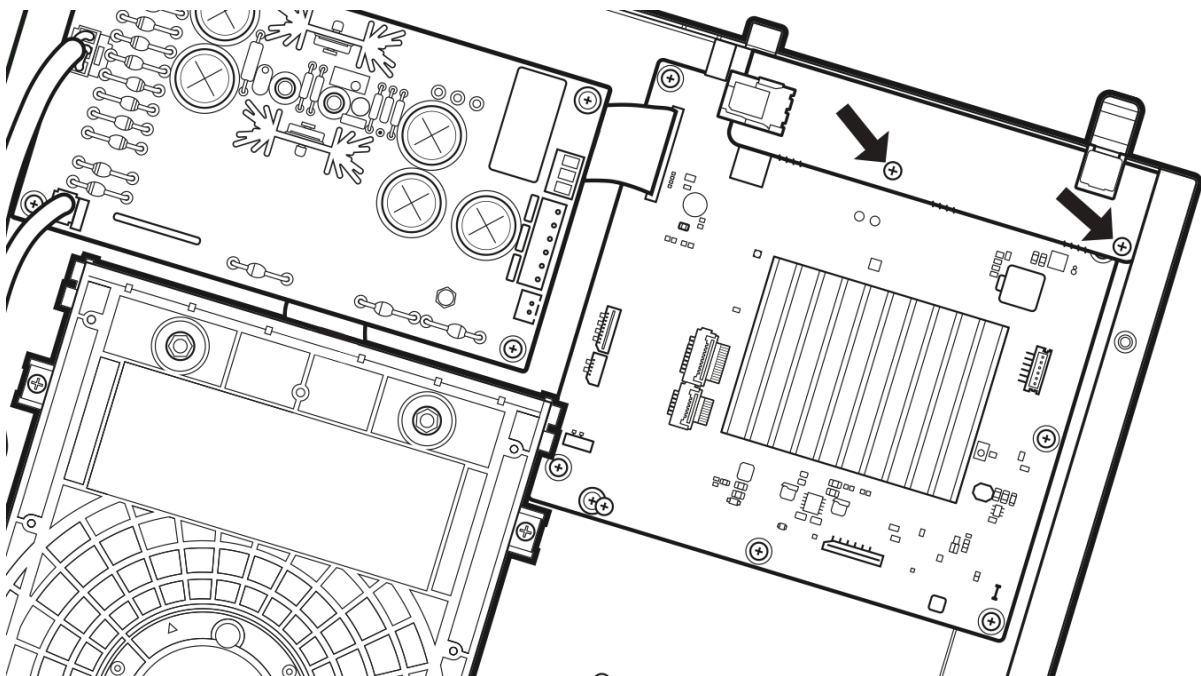
Once the motherboard is in place, there are **2 screws to put in**. Use the screws from **bag number 1** and **screw them in** using the Phillips screwdriver.



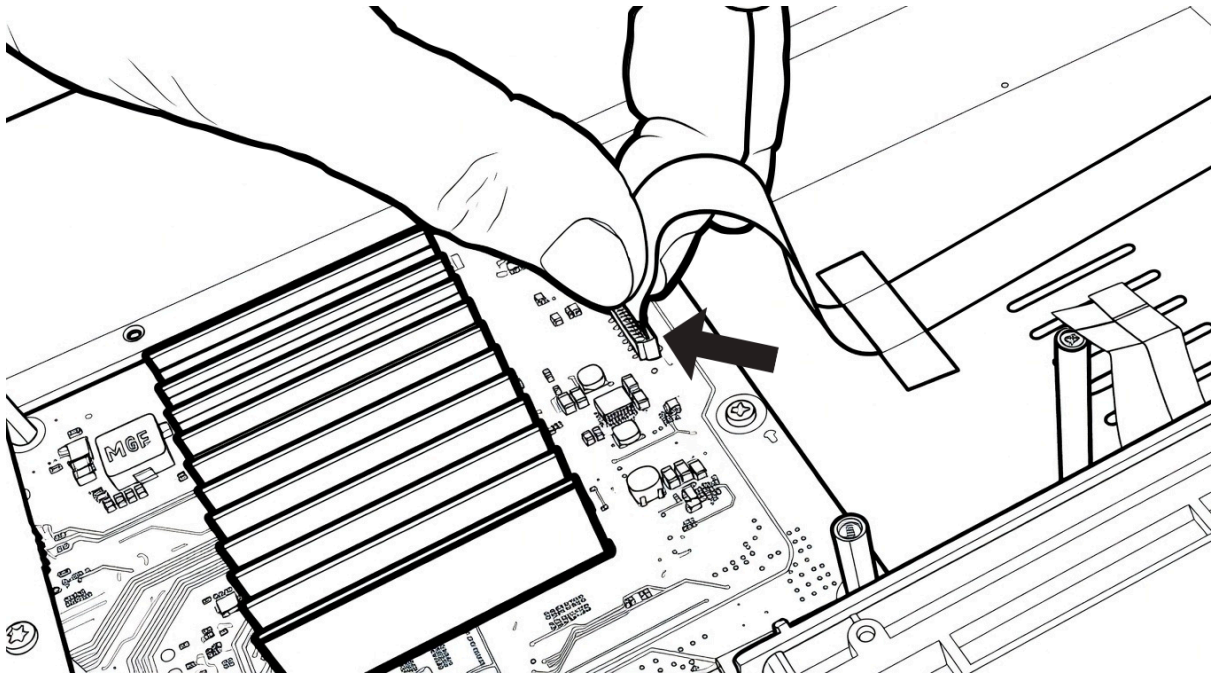
Then, **screw in the two spacers** that were removed previously at the locations indicated by the arrows on the diagram above.



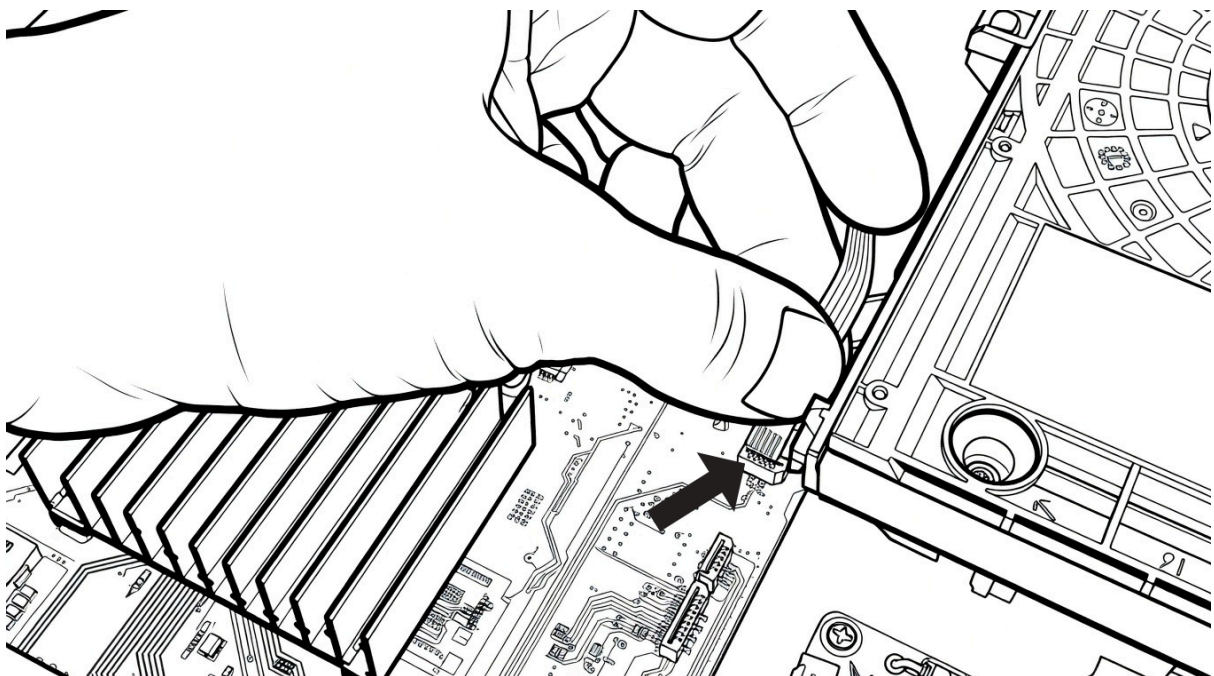
Next, place the electronic board lengthwise, which we had set aside earlier. Position it over the spacers located near the back of the R_olution chassis.



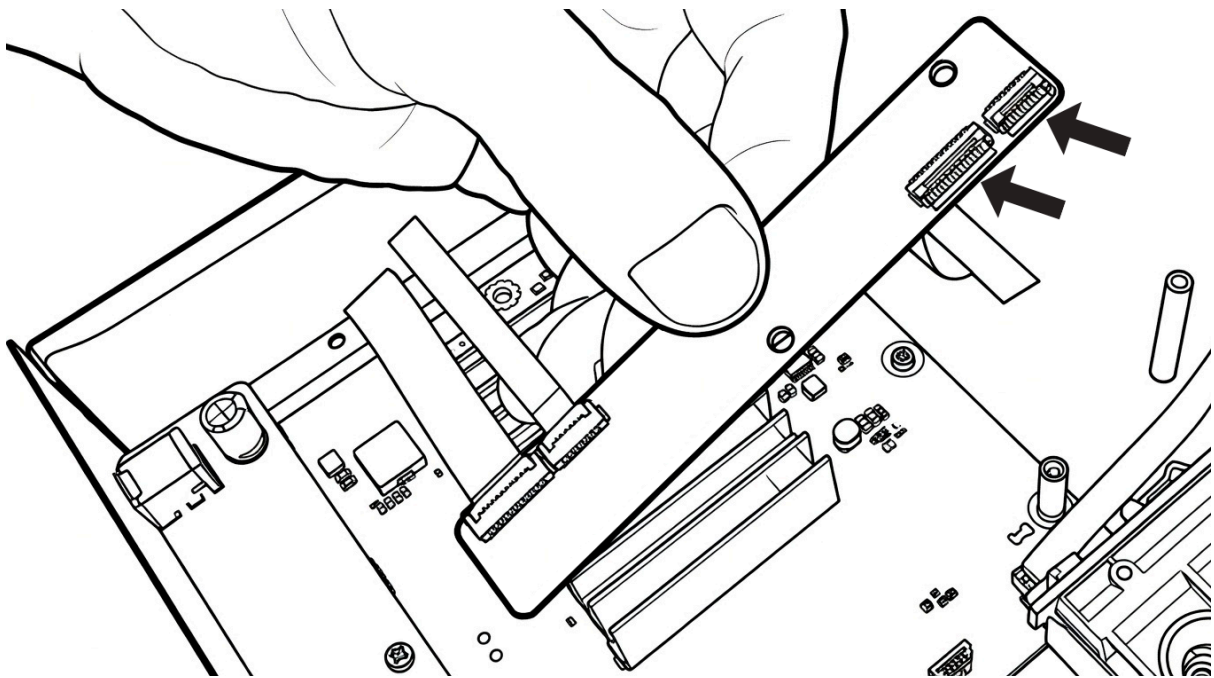
Then, take 2 screws from bag number 1 and screw them onto the circuit board lengthwise at the location indicated by the arrow in the diagram above using the Phillips screwdriver.



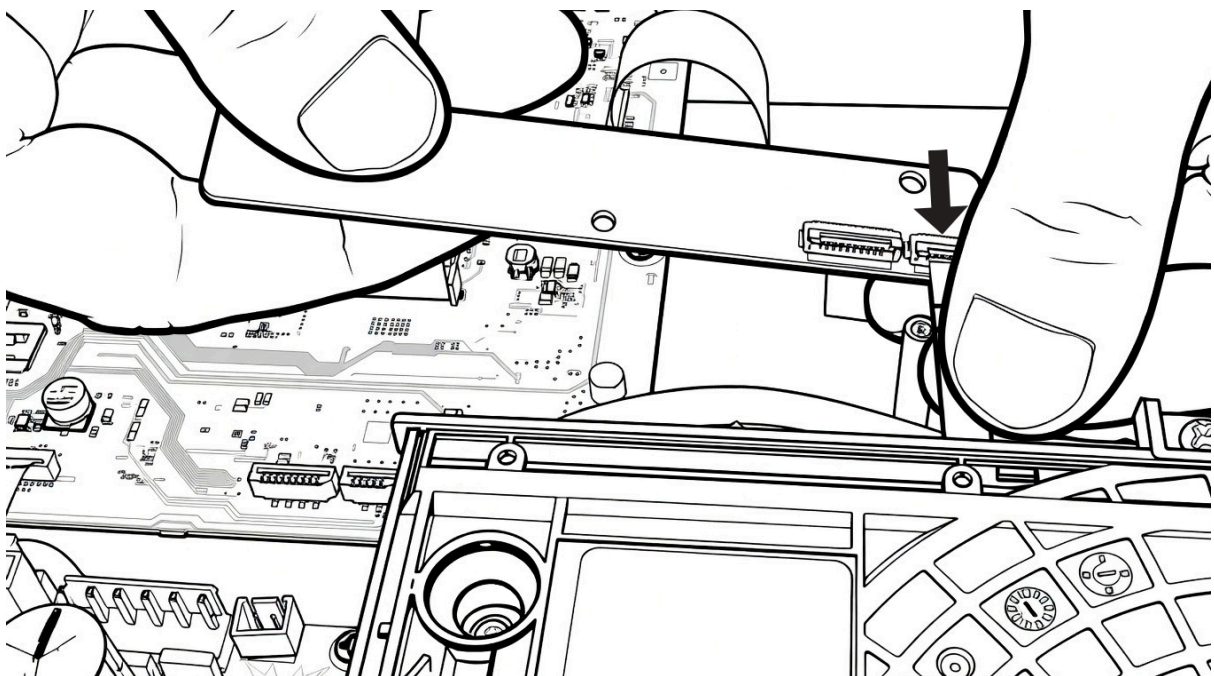
Then, there are **two ribbon cables to connect to the motherboard**. Start by connecting the **widest ribbon cable to the connector** indicated by the arrow in the diagram above.



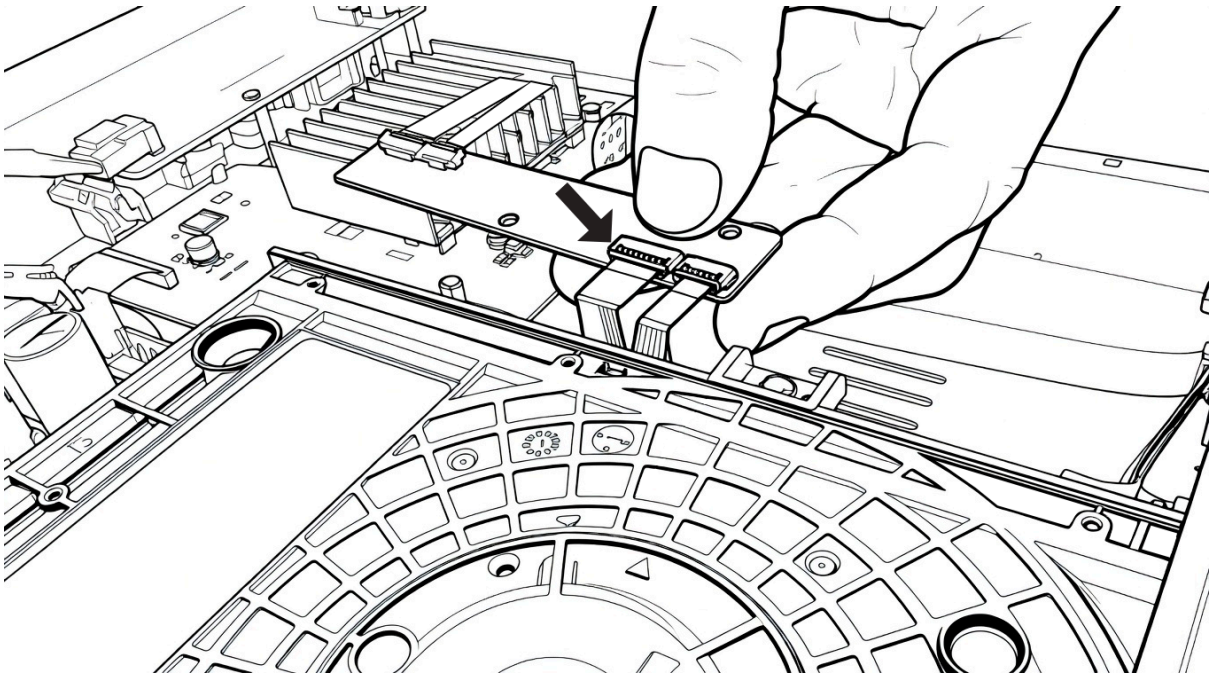
Then, **connect the small ribbon cable** that is located near the optical block.



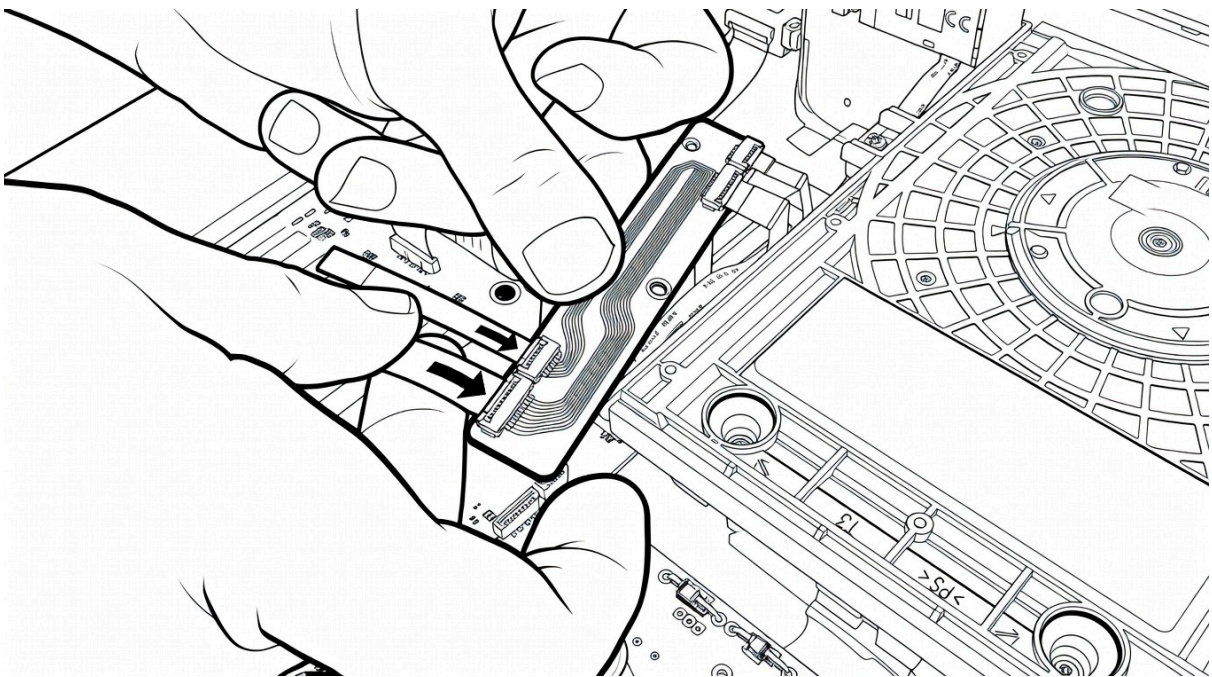
Then, **take the small card lengthwise** with the two empty ribbon connectors. On each of the two connectors, **lift the latch** that prevents the insertion of the ribbons.



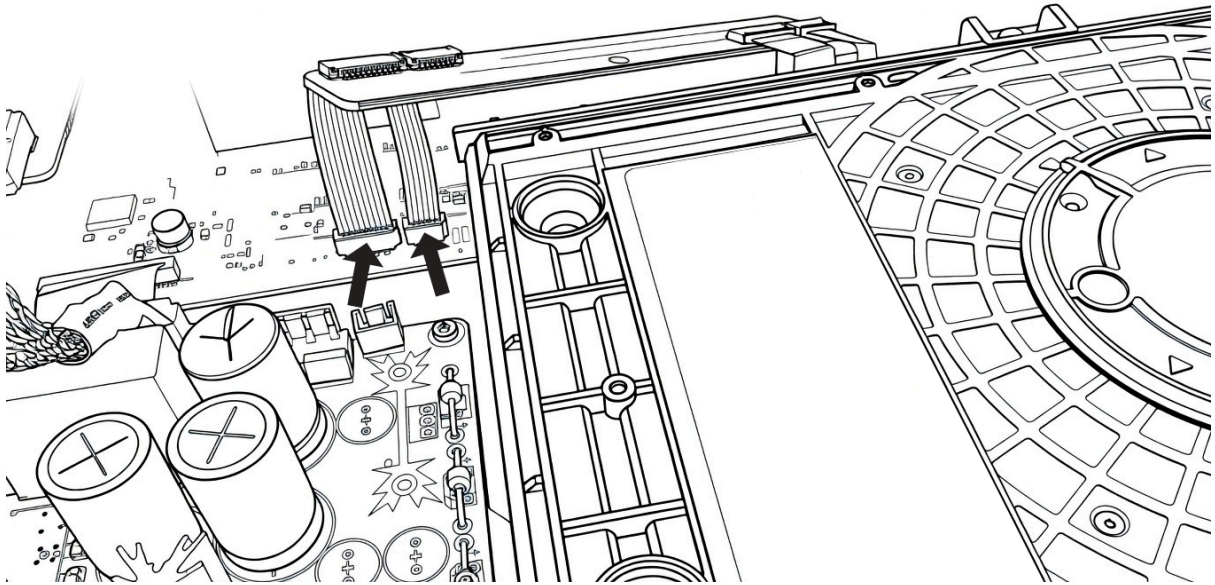
Then, **insert the small ribbon cable into the small connector** and **close the latch**.



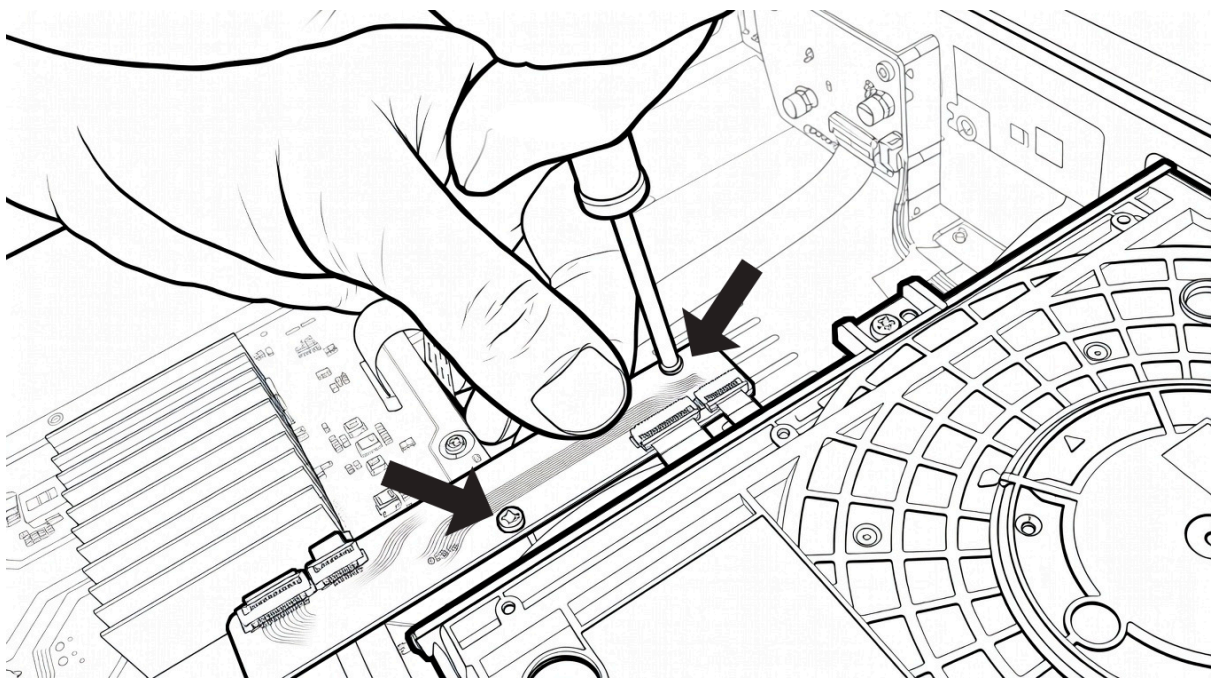
Proceed in the same way for the **large ribbon cable** that connects the optical block to the small electronic board in length. **Insert the ribbon cable into the large connector and close the latch.**



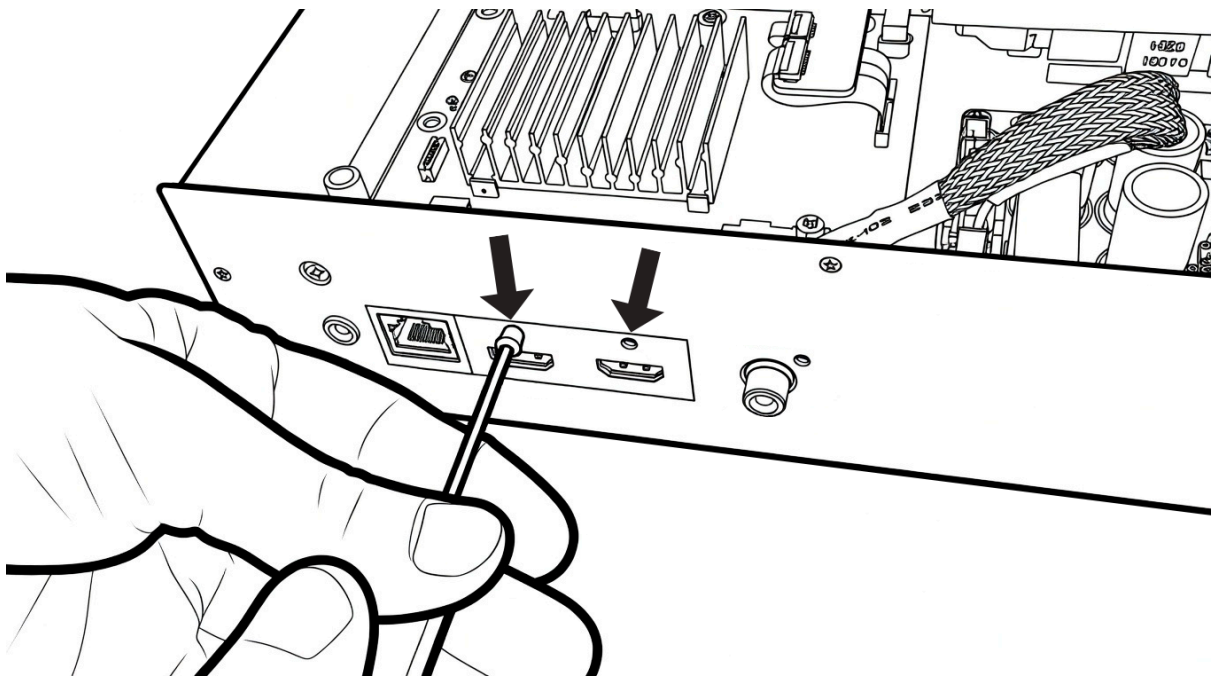
There remain the **two ribbons of the electronic board to connect**, indicated by the arrows on the diagram above.



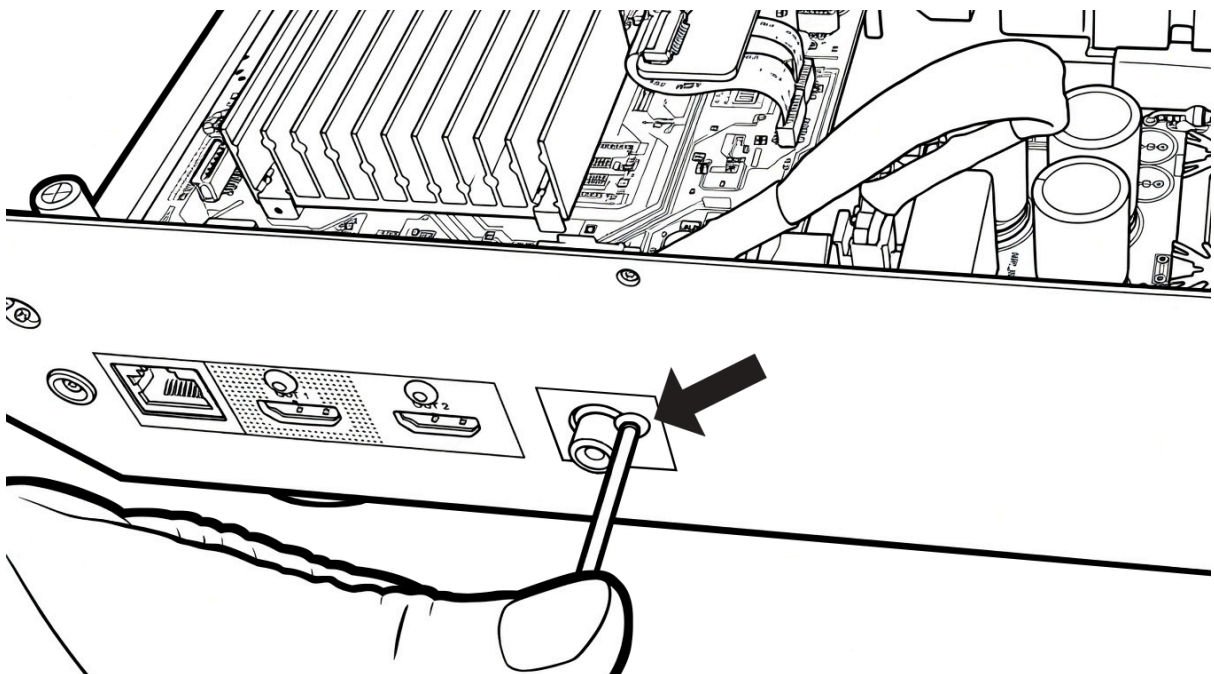
Connect the **two ribbons** in the **dedicated slots** on the **motherboard** located just below the electronic card.



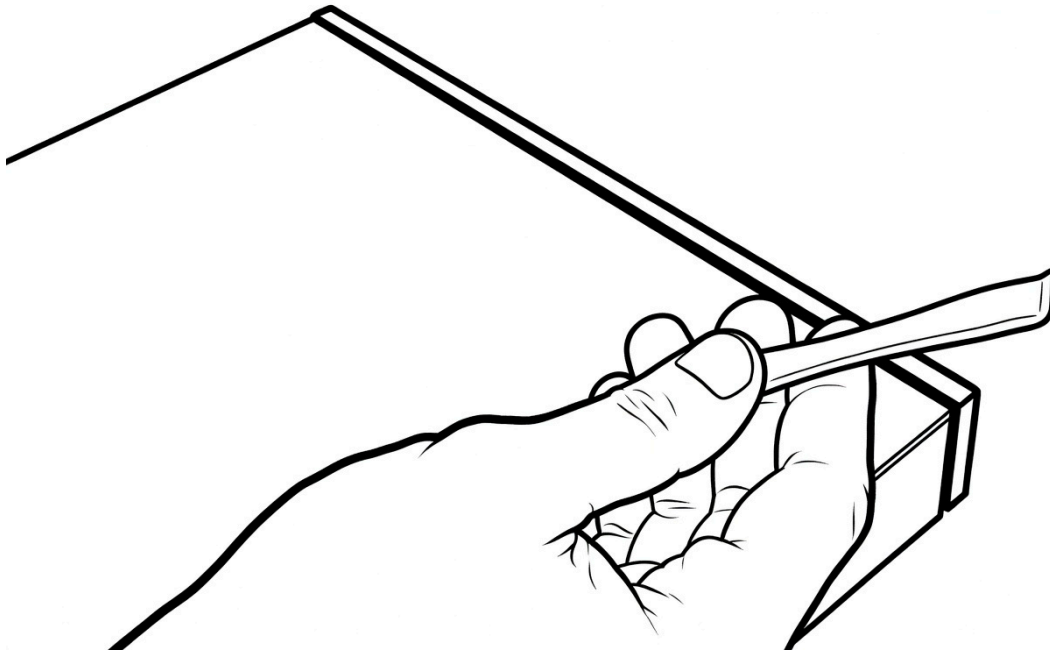
Next, **take 2 screws** from **bag number 1** and **screw the electronic board lengthwise** with the **2 screws** using the Phillips screwdriver.



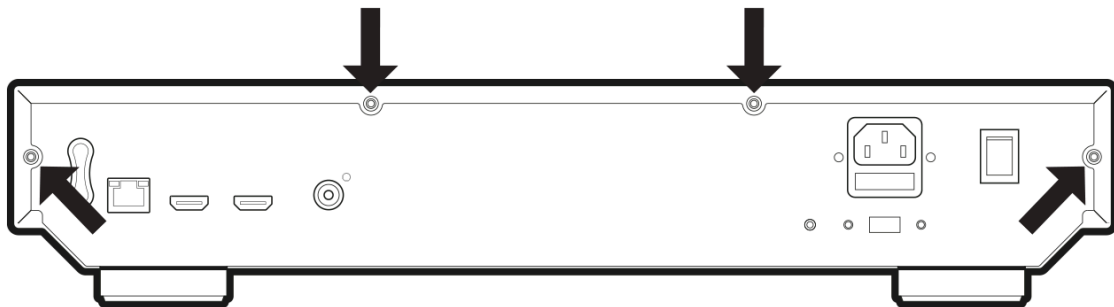
The **HDMI connectors** still need to be attached. For this, take the **screws** from **bag number 3** and use the provided Allen screwdriver to screw them in.



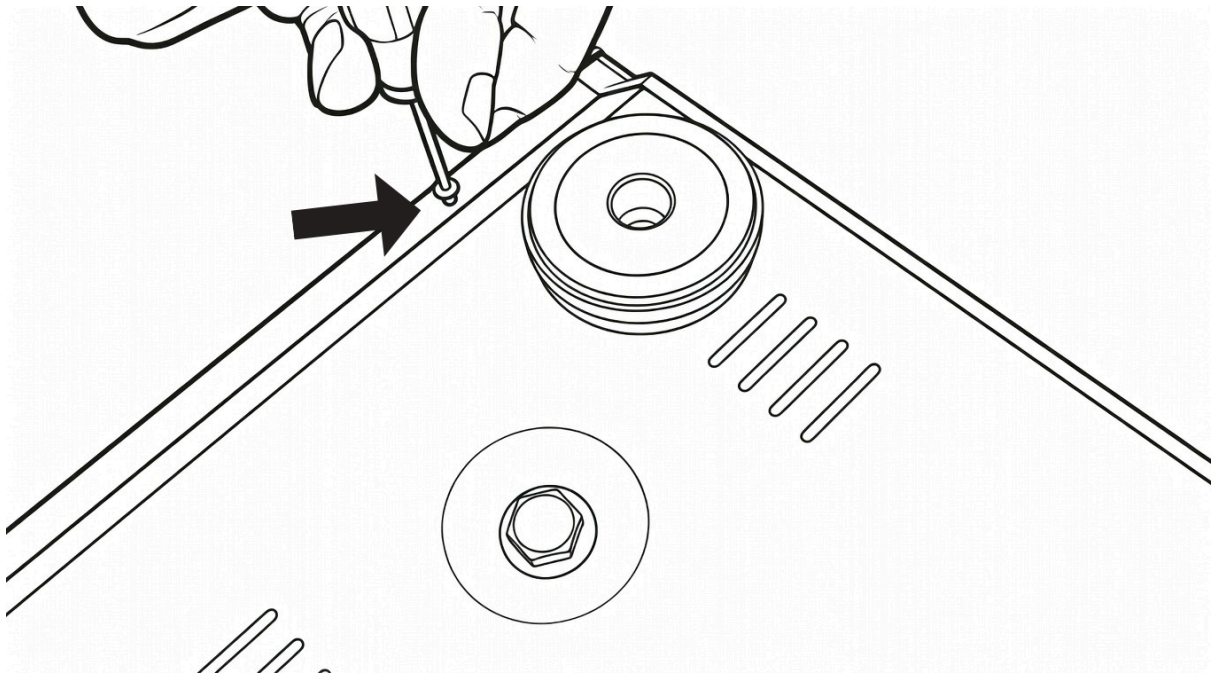
Do the same for the **coaxial connector**. Use a **screw** from bag **number 3** and screw it in using the supplied Allen screwdriver. Then, **take the chassis cover** and **slide it over** starting from the back of the device.



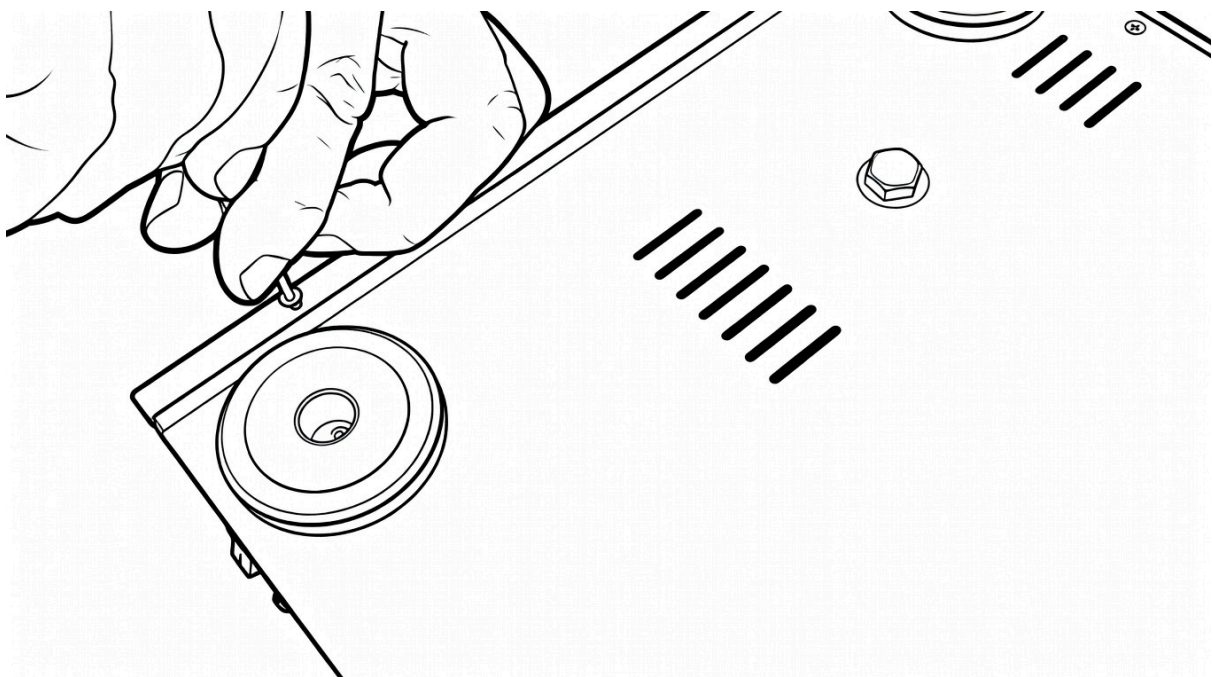
If you have difficulty closing the hood, **use the provided tool** to slightly lift the hood, which can then complete its closure.



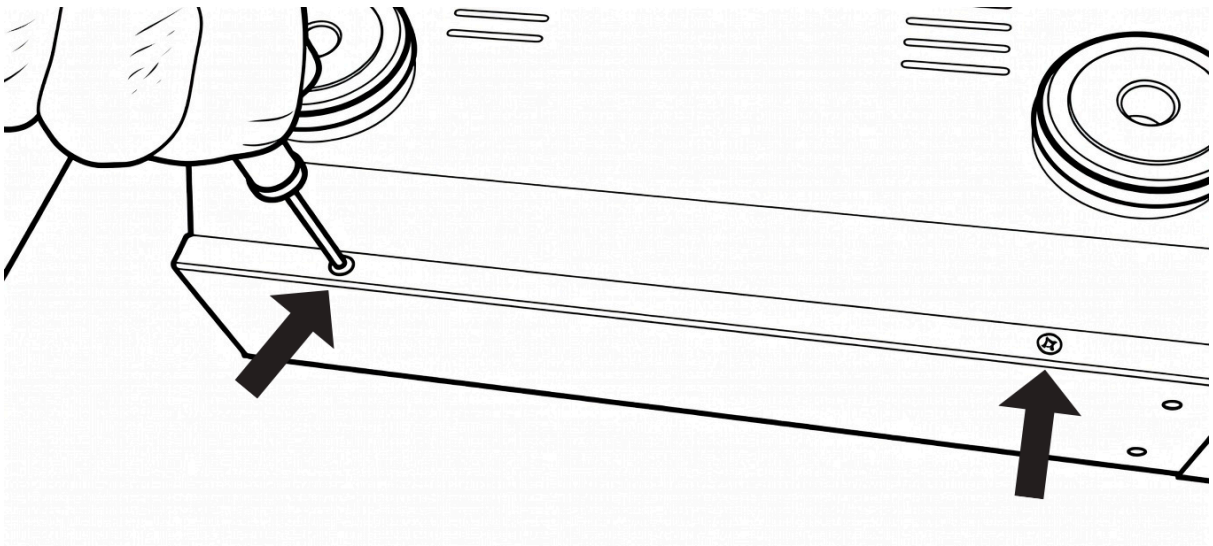
Take 4 screws from **bag number 2** and **screw them** into the locations indicated by the arrows on the diagram above to secure the cover. Use the Allen screwdriver.



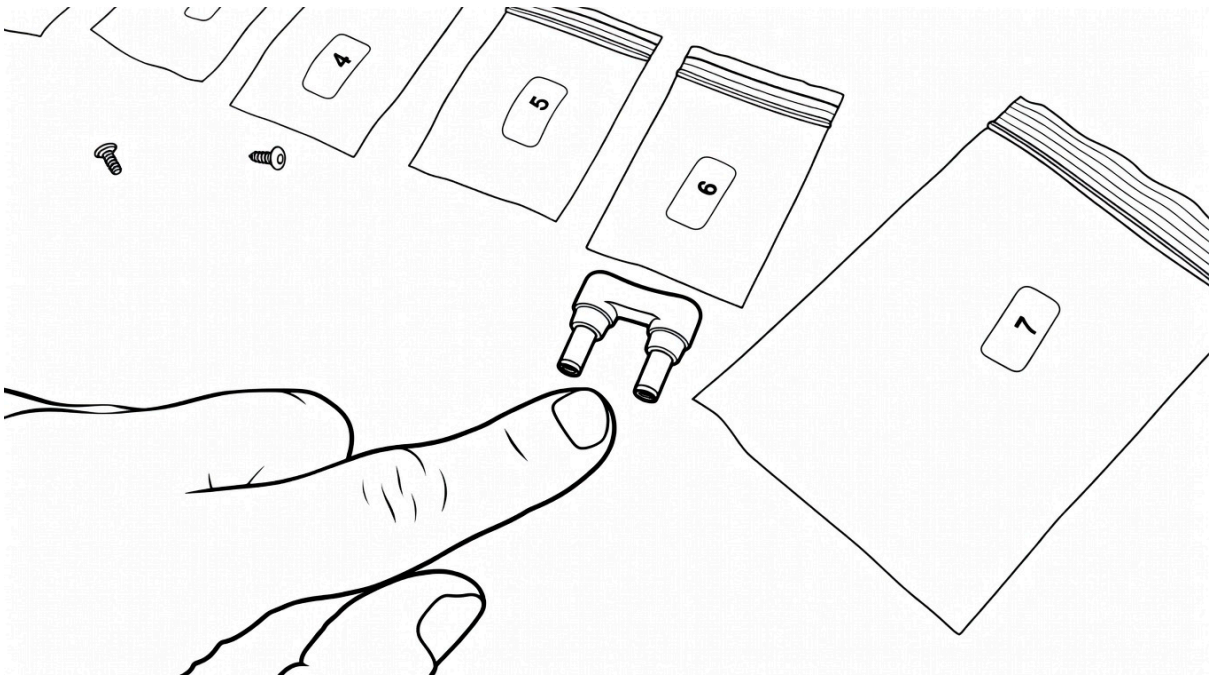
Finally, there are **4 screws** left to screw under the chassis. Turn the chassis over. Then, still using the **screws** from **bag number 2**, screw **4 screws** into the **holes** located on the sides of the bottom, near the feet.



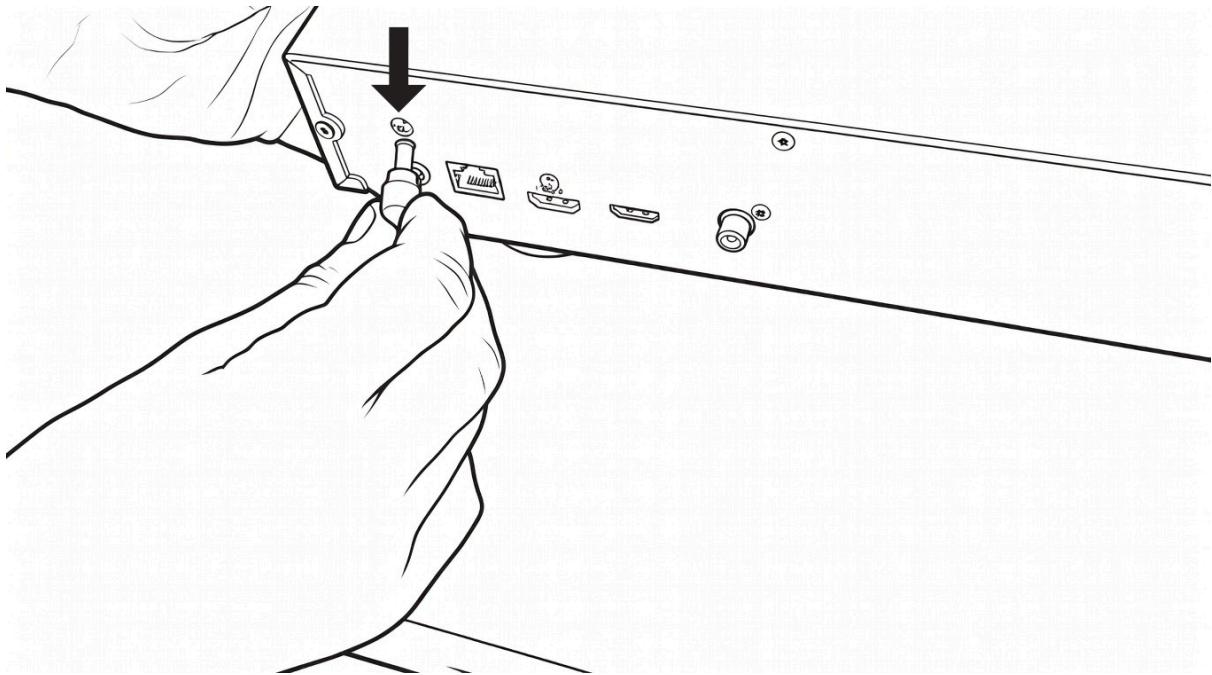
Screw the **second screw** into the **hole** located near the left rear foot.



Do the same for the other **two holes** located on the **opposite side**.



In **bag number 6**, retrieve the **U-shaped adapter** and connect it to the designated slot on the left side of the back of the device. *This adapter allows the motherboard to connect to the R_volution linear power supply.*



The **adapter** is equipped with a **keying feature**. This way, you will not be able to insert it the wrong way when you connect it.

And there you go! Your player is **ready to use!**

R.volution

rvolution.com / rvolution.store